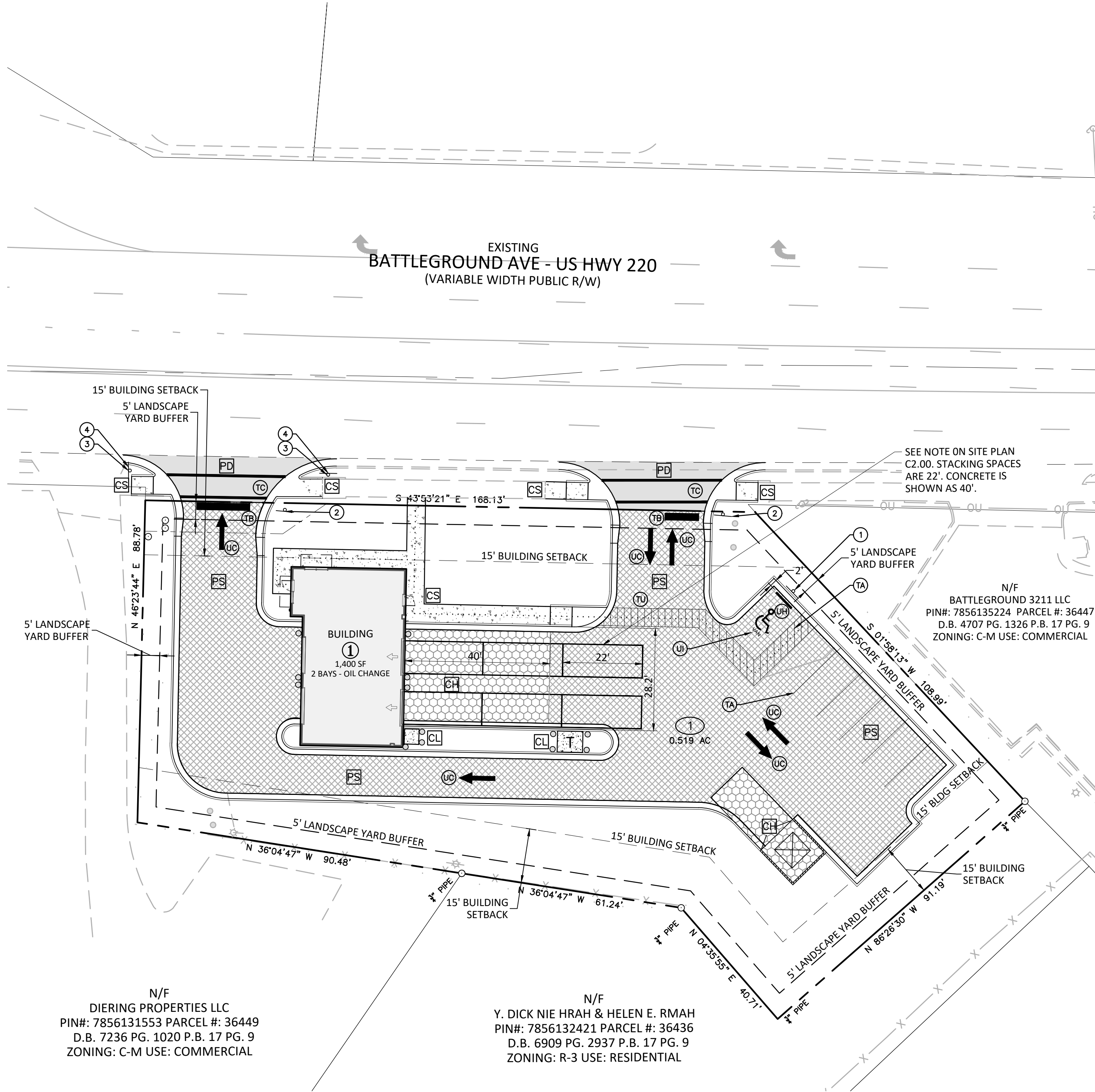


\\Projects\N110459\04-Production\Engineering\Construction Drawings\Current Drawings\2021110459-PM1.dwg, 12/21/2021 3:31:42 PM, Angie Paula



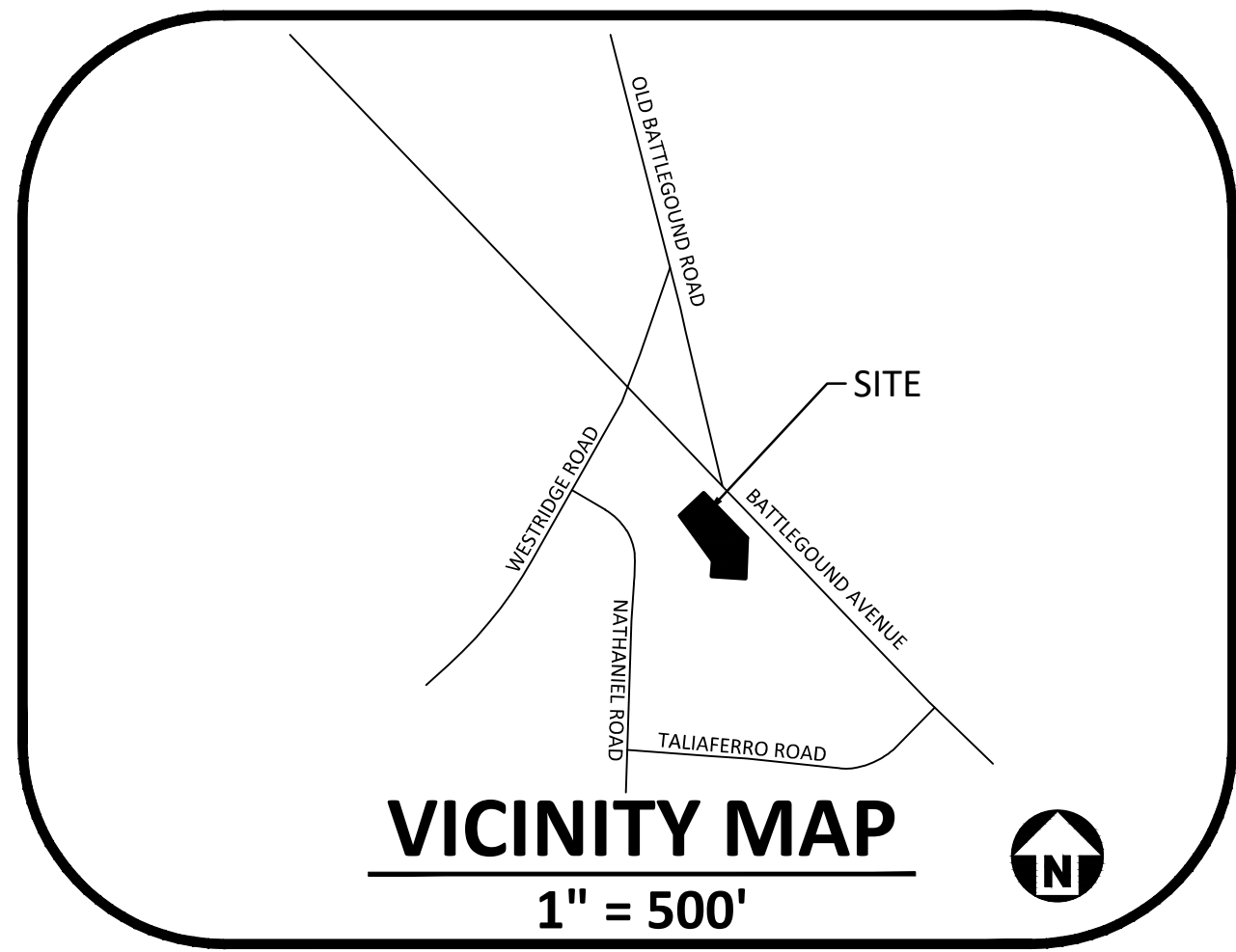
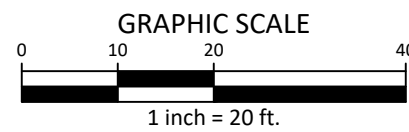
Know what's below.  
Call before you dig.

CONTRACTOR SHALL NOTIFY "NC811" (811) OR (1-800-632-4949) AT  
LEAST 3 FULL BUSINESS DAYS PRIOR TO BEGINNING CONSTRUCTION  
OR EXCAVATION TO HAVE EXISTING UTILITIES LOCATED.  
CONTRACTOR SHALL CONTACT ANY LOCAL UTILITIES THAT PROVIDE  
THEIR OWN LOCATOR SERVICES INDEPENDENT OF "NC811".  
REPORT ANY DISCREPANCIES TO THE ENGINEER IMMEDIATELY.



N/F  
DIERING PROPERTIES LLC  
PIN#: 7856131553 PARCEL #: 36449  
D.B. 7236 PG. 1020 P.B. 17 PG. 9  
ZONING: C-M USE: COMMERCIAL

N/F  
Y. DICK NIE HRAH & HELEN E. RMAH  
PIN#: 7856132421 PARCEL #: 36436  
D.B. 6909 PG. 2937 P.B. 17 PG. 9  
ZONING: R-3 USE: RESIDENTIAL



	CL	LIGHT DUTY CONCRETE PAVEMENT (HVAC & TRANSFORMERS)		PS	STANDARD ASPHALT PAVEMENT SECTION
	CS	STANDARD DUTY CONCRETE PAVEMENT		PD	NCDOT ROAD (PAVEMENT ON R.O.W)
	CH	HEAVY DUTY CONCRETE PAVEMENT		PR	EXISTING ASPHALT PAVEMENT REPAIR

	LIGHT DUTY	STANDARD DUTY	HEAVY DUTY
CONCRETE (4,000 PSI W/ MEDIUM BROOM FINISH)	4.0" W/ 6X6 W1.4XW1.4 W.W.F.	5.0" W/ 6X6 W1.4XW1.4 W.W.F.	6.0" W/ 6X6 W1.4XW1.4 W.W.F.
CRUSHED AGGREGATE BASE COURSE (ABC)	5.0"	6.0"	6.0"

COMPACTED SUBGRADE TO 98% DRY DENSITY, MODIFIED PROCTOR ASTM D1557

CONCRETE PAVEMENT SECTIONS  
(SEE NOTE 1) N.T.S.

	STANDARD DUTY
ASPHALTIC CONCRETE SURFACE COURSE (SF9.5B)	2.0"
ASPHALTIC CONCRETE SURFACE COURSE (BM-25.0)	-
CRUSHED AGGREGATE BASE COURSE (ABC) (AASHTO #21A/21B)	8.0"

12" MIN. COMPACTED SUBGRADE TO 98% DRY DENSITY, MODIFIED PROCTOR ASTM D1557

ASPHALT PAVEMENT SECTIONS  
(SEE NOTE 1) N.T.S.

	DOT PAVEMENT
5-9.5C ASPHALT SURFACE COURSE (TWO-LIFTS)	3.0"
1-19.0B ASPHALT SURFACE COURSE	4.0"
CRUSHED AGGREGATE BASE COURSE (ABC) PER 520 NCDOT STANDARD SPEC. (OR 5" B25.0C)	10"

COMPACTED SUBGRADE TO 98% DRY DENSITY (ASTM D698). REFER TO SOIL REPORT IF AVAILABLE

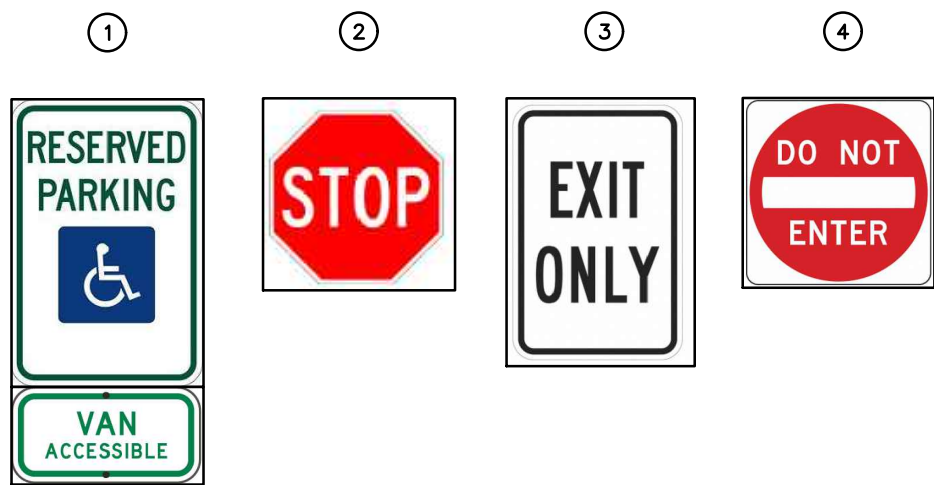
PD NCDOT ASPHALT PAVEMENT SECTIONS DETAIL  
(SEE NOTE 1) N.T.S.

PAVEMENT MARKING LEGEND

- LANE LINES/MARKINGS
- TA 4" WHITE
  - TB 24" WHITE
  - TC 8" WHITE
  - TU 12" WHITE WIDE DIAGONAL
- ARROWS/CHARACTERS
- UC STRAIGHT ARROW
  - UH HANDICAP PARKING
  - U ALPHANUMERIC CHARACTER

NOTES:  
1. ALL CONSTRUCTION SHALL CONFORM TO THE LATEST LOCAL AND CURRENT CITY OF GREENSBORO ENGINEERING DESIGN AND CONSTRUCTION STANDARDS AND/OR NCDOT STANDARDS AND SPECIFICATIONS AS APPLICABLE

SIGN LEGEND:



ALL CONSTRUCTION SHALL BE IN ACCORDANCE WITH THE CURRENT CITY OF GREENSBORO ENGINEERING DESIGN AND CONSTRUCTION STANDARDS

PRELIMINARY DRAWING - NOT RELEASED FOR CONSTRUCTION

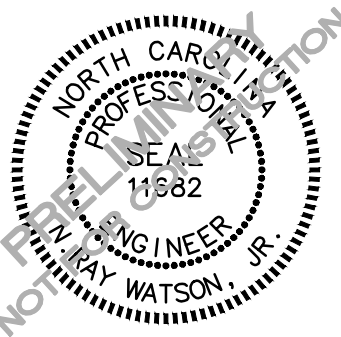
**McADAMS**  
The John R. McAdams Company, Inc.  
2905 Meridian Parkway  
Durham, NC 27713  
phone 919. 361. 5000  
fax 919. 361. 2269  
license number: C-0293, C-187  
www.mcadamsco.com

CLIENT

N3 REAL ESTATE  
1240 N KIMBALL AVE  
SOUTH LAKE, TX 76092  
PHONE: 817. 348. 8748



STRICKLAND BROTHERS  
OIL CHANGE  
SITE PLAN SUBMITTAL  
3223 BATTLEGROUND AVE.  
GREENSBORO, NORTH CAROLINA



REVISIONS

NO.	DATE	DESCRIPTION
-----	------	-------------

PLAN INFORMATION

PROJECT NO.	2021110459
FILENAME	2021110459-PM1
CHECKED BY	NRW
DRAWN BY	KST
SCALE	1" = 20'
DATE	12. 21. 2021

SHEET

PAVMENT AND MARKING PLAN

C2.01