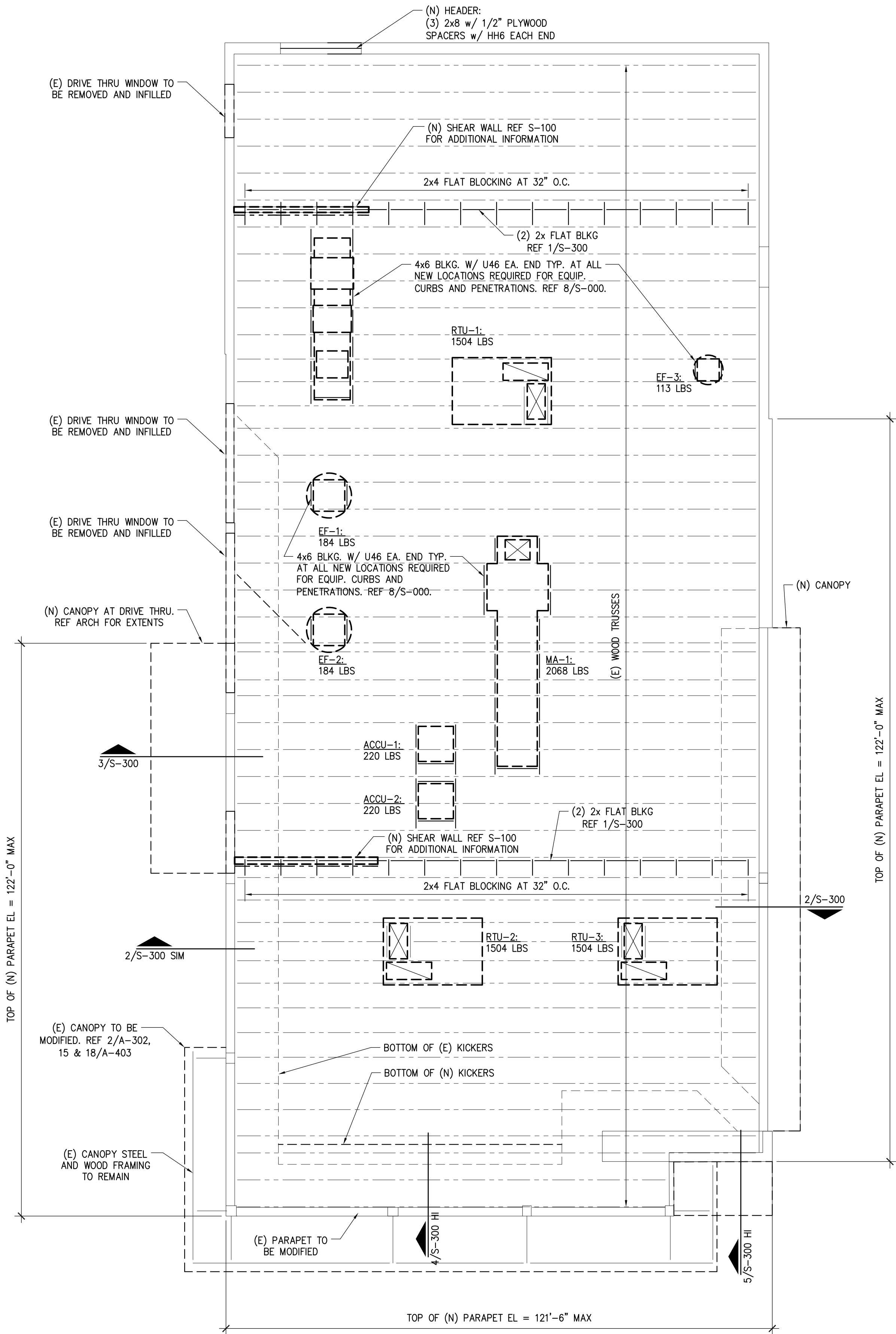
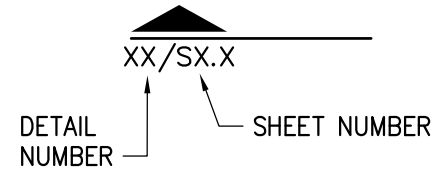


- PLAN NOTES
1. CONTRACTOR TO FIELD VERIFY ALL ASPECTS OF BUILDING SUCH THAT EXISTING BUILDING ELEMENTS TO REMAIN ARE NOT DAMAGED DURING CONSTRUCTION.
 2. RTU-1, RTU-2, AND RTU-3 SHALL BE MOUNTED ON EXISTING CURBS.

LEGEND



PANDA EXPRESS, INC.
1683 Walnut Grove Ave.
Rosemead, California
91770
Telephone: 626.799.9898
Facsimile: 626.372.8288

All ideas, designs, arrangement and plans indicated or represented by this drawing are the property of Panda Express Inc. and were created for use on this specific project. None of these ideas, designs, arrangements or plans may be used by or disclosed to any person, firm, or corporation without the written permission of Panda Express Inc.

REVISIONS:

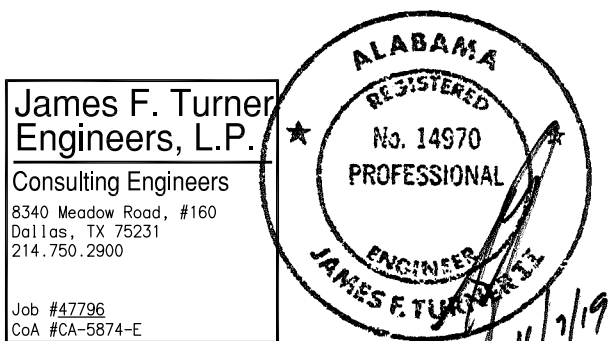
ISSUE DATE:

1st	DEVELOPER REVIEW	07.15.19
2nd	SITE PLAN SUBMITTAL	08.26.19
3rd	SITE COMMENTS	09.05.19
4th	ISSUE FOR PERMIT	10.01.19
5th	ISSUE FOR BID	11.07.19

DRAWN BY: PM / KL / EA

PANDA PROJECT #: S8-20-D7163

ARCH PROJECT #: 19027



Heights Venture
ARCHITECTURE • DESIGN

HOUSTON 1111 North Loop West, Suite 800
Houston, Texas 77008
713 869 1103 V

DALLAS 5741 Legacy Drive, Suite 320
Plano, Texas, 75024
972 490 7292 V

PANDA EXPRESS

2096 INTERSTATE DR.
OPELIKA, AL, 36801
3600 FSDT

TWW REMODEL

S-101

FRAMING PLAN

FRAMING PLAN

1

Scale: 3/16"=1'-0"

S-101

TRUE WARM & WELCOME

BID ISSUE