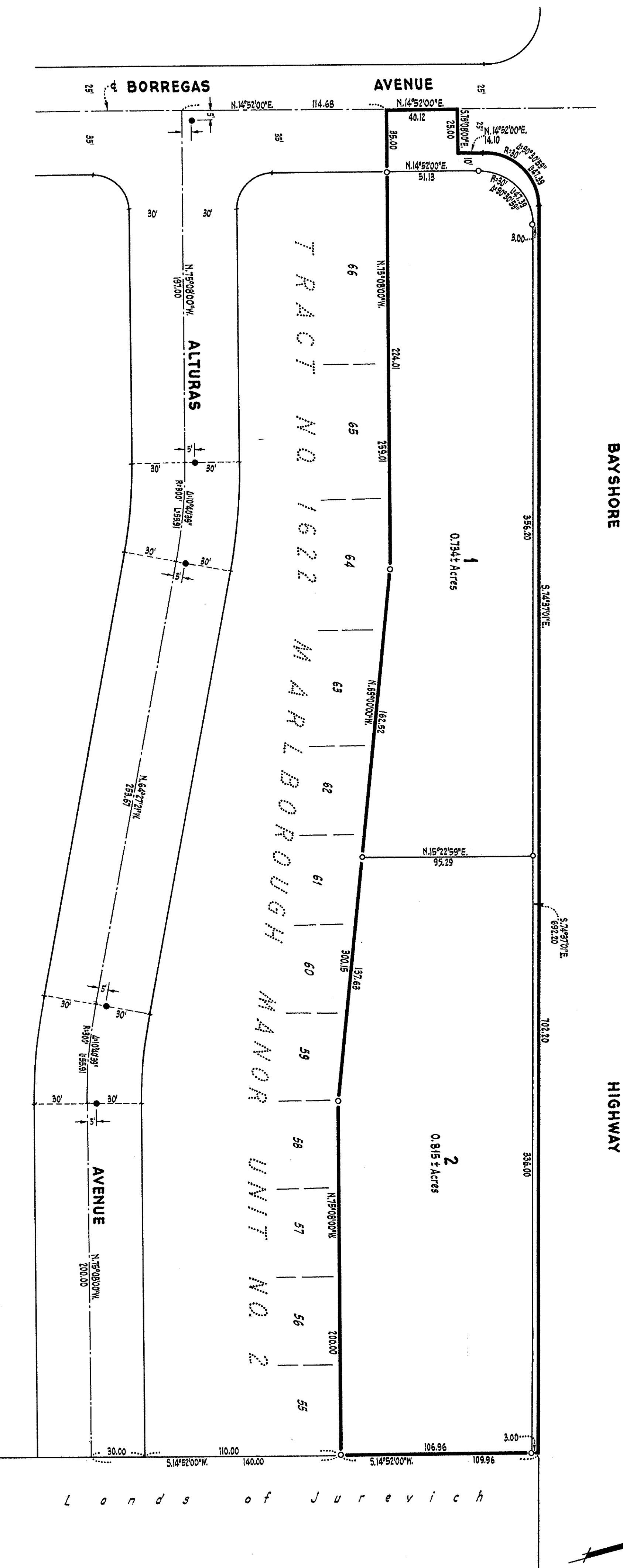


BASIS OF BEARINGS
The bearing N.75°08'00"W. of the centerline of Alturas Avenue as shown on that certain map entitled "Tract No. 1622 Marlborough Manor Unit No. 2," recorded in Book 63 of Maps of page 43, records of Santa Clara County, California, was taken as the basis of bearings shown on this map.

NOTES AND LEGEND
All distances and dimensions are shown in feet and decimals thereof.
● Indicates steel iron pipe monument found.
○ Indicates iron pipe monument set.



RECORD OF SURVEY

OF A PORTION OF LOTS 51 AND 52
MAP OF J.T. MURPHY SUBDIVISION NO. 3rd

FOR JOHN O. BLUETT

SUNNYVALE, CALIFORNIA.

JOHN W. RILEY
CIVIL ENGINEER
LOS ALTOS, CALIFORNIA.

SCALE: 1"=40'

FEBRUARY, 1962.

SURVEYOR'S CERTIFICATE

This map correctly represents a survey made by me or under my direction in conformance with the requirements of Chapter 15 of Division 3 of the Business and Professions Code at the request of John O. Bluet in February, 1962.

John O. Bluet
R.C.E.1064

COUNTY SURVEYOR'S CERTIFICATE

This map has been examined for conformance with the requirements of Chapter 15 of Division 3 of the Business and Professions Code this 2nd day of *March*, 1962.

JAMES T. PATT, County Surveyor
by Deputy *James T. Patt*

RECORDER'S CERTIFICATE

File No. *22-3-2617* Fee *\$5.00* Paid
Filed for record this *24* day of *August*, 1962, at *1:44 PM*, in Book *1550* of Maps of page *32* of the request of John W. Riley.

PAUL R. TELLE, County Recorder
by Deputy *Paul R. Telle*