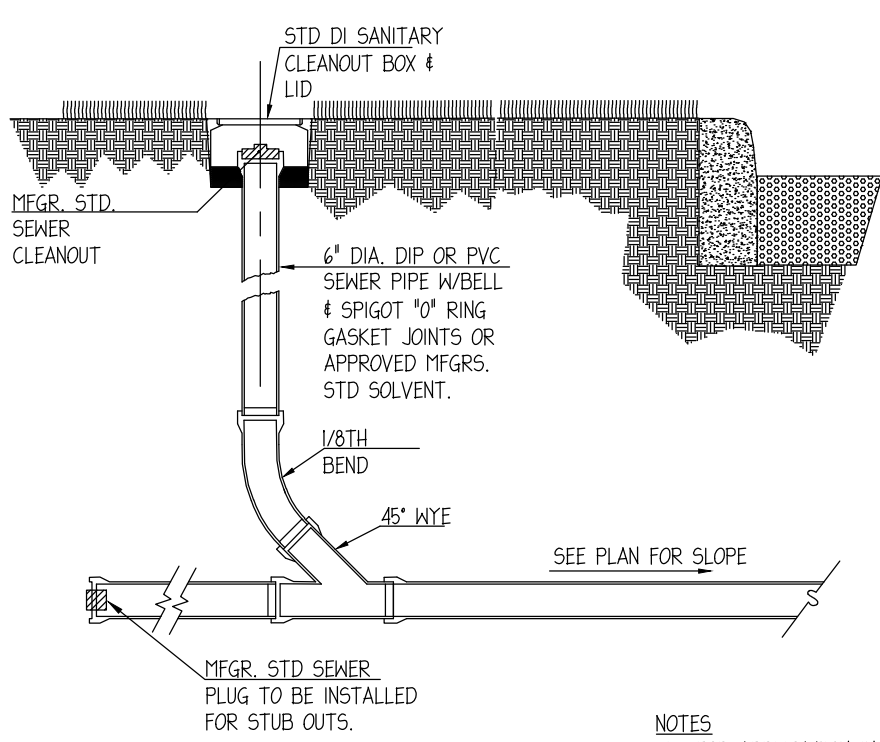
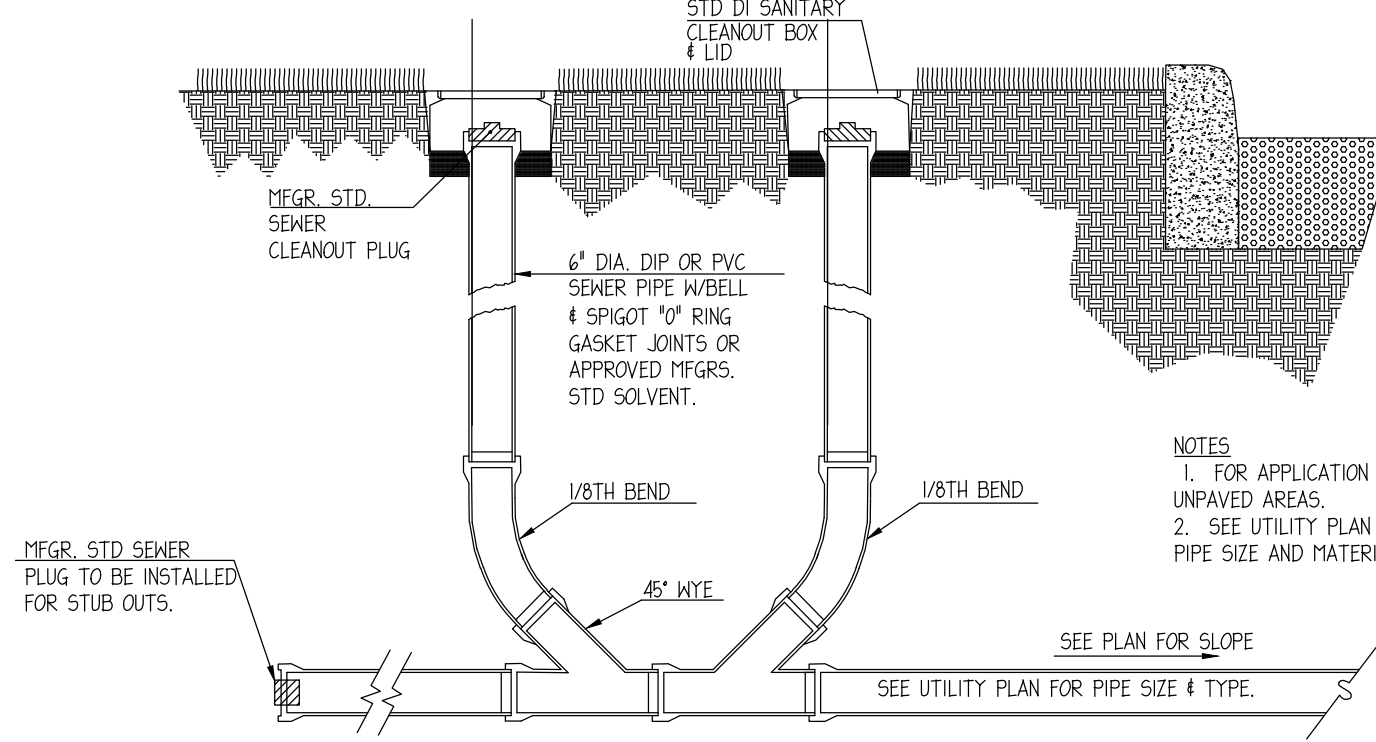


FOR PAVEMENT APPLICATION



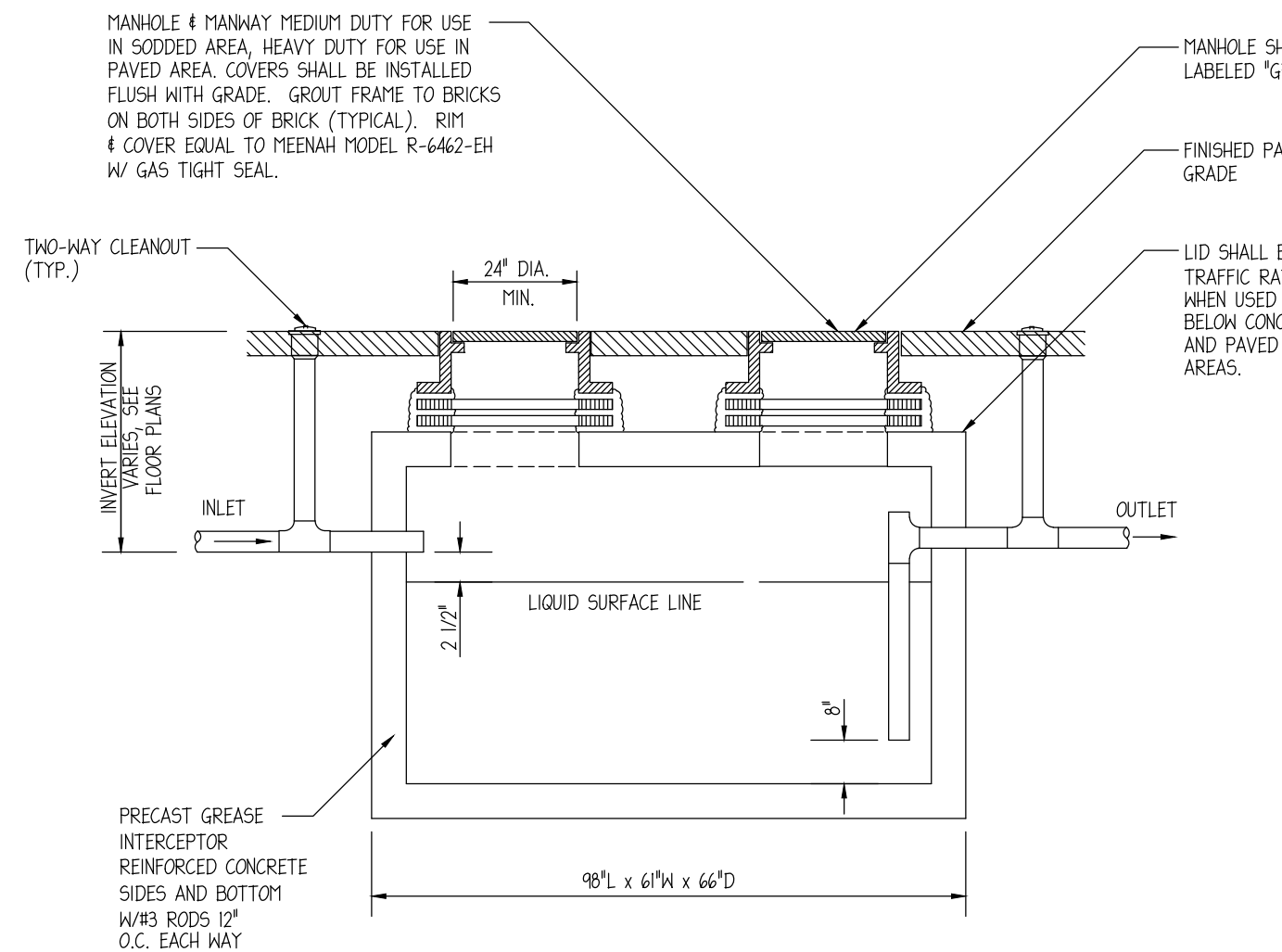
ONE-WAY

NOTES:
1. FOR APPLICATION IN UNPAVED AREAS.
2. SEE UTILITY PLAN FOR PIPE SIZE AND MATERIAL.



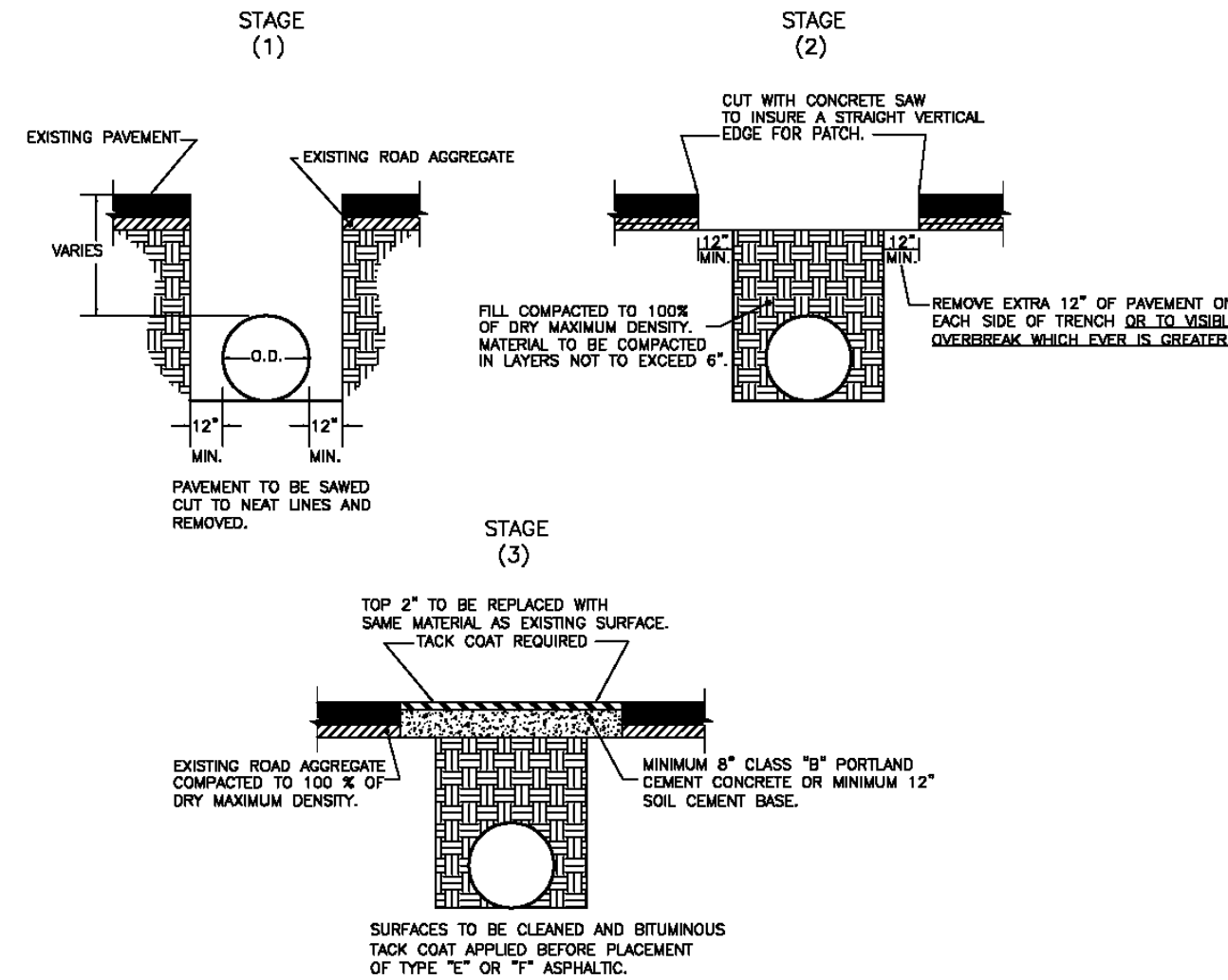
TWO-WAY

NOTES:
1. FOR APPLICATION IN UNPAVED AREAS.
2. SEE UTILITY PLAN FOR PIPE SIZE AND MATERIAL.
TO JURISDICTIONAL LATERAL, OUTFALL, OR TRUNK SEWER.



NOTE:

1. (1) GREASE INTERCEPTOR WITH 1250 GALLON CAPACITY. THIS GREASE TRAP SHALL COMPLY WITH ALL LOCAL CODES.



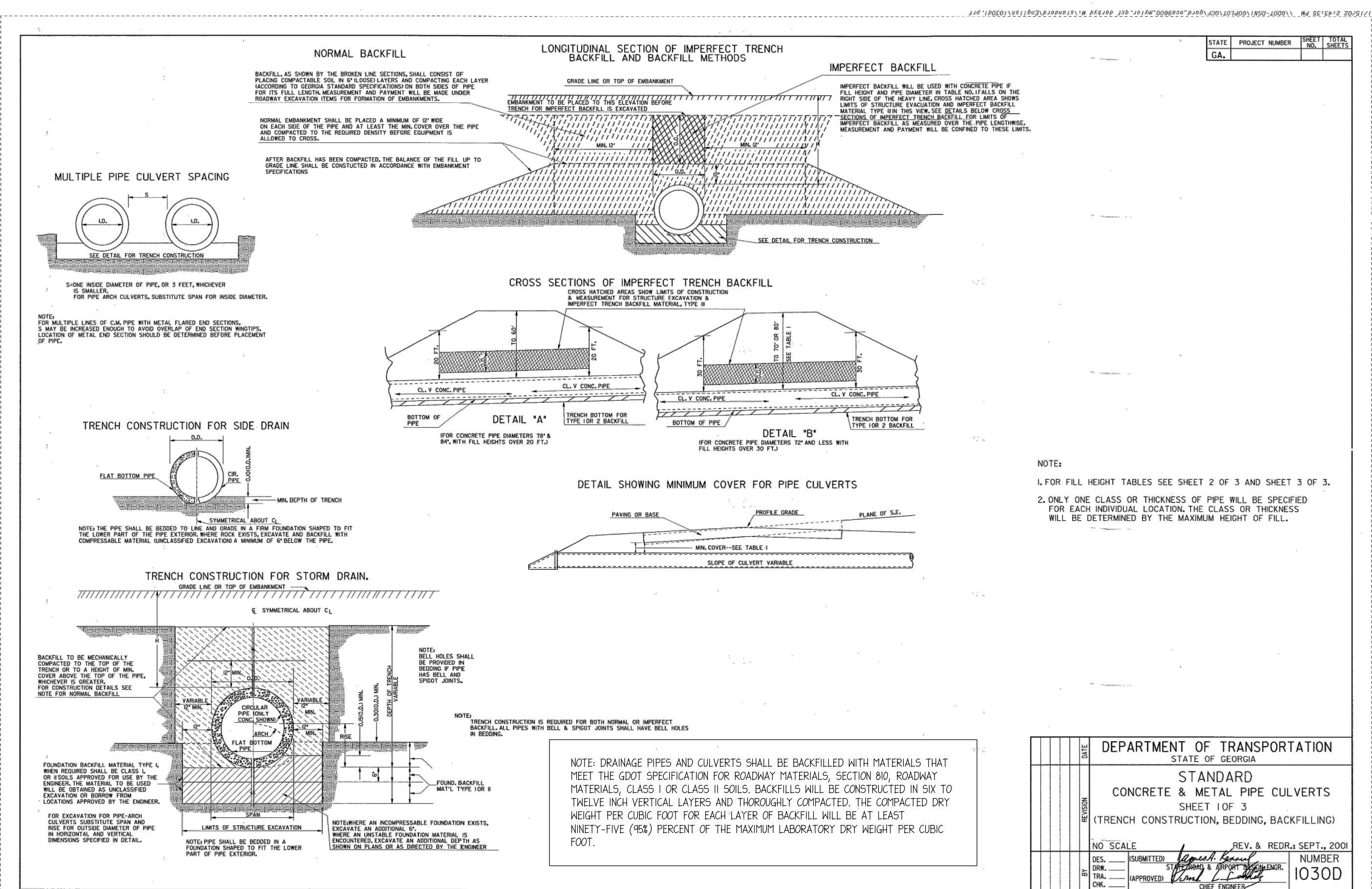
CLAYTON COUNTY WATER AUTHORITY

DATE:	12 FEBRUARY 2002	DETAIL TITLE:	DETAIL No.
SCALE:	N.T.S.	TYPICAL ASPHALT REPLACEMENT	28.1
DRAWN BY:	WWB		

3 TYPICAL ASPHALT REPLACEMENT NTS

1 SANITARY CLEANOUT NTS

2 1,250 GALLON GREASE TRAP NTS



STATE	PROJECT NUMBER	SHEET TOTAL
GA.		

NO.	SCALE	REV.	DATE	BY	CHK.	APP.	DATE
1	NO SCALE	REV. 8	SEPT. 2000	W. B. BROWN			
2	NO SCALE	REV. 9	SEPT. 2000	W. B. BROWN			
3	NO SCALE	REV. 10	SEPT. 2000	W. B. BROWN			
4	NO SCALE	REV. 11	SEPT. 2000	W. B. BROWN			
5	NO SCALE	REV. 12	SEPT. 2000	W. B. BROWN			
6	NO SCALE	REV. 13	SEPT. 2000	W. B. BROWN			
7	NO SCALE	REV. 14	SEPT. 2000	W. B. BROWN			
8	NO SCALE	REV. 15	SEPT. 2000	W. B. BROWN			
9	NO SCALE	REV. 16	SEPT. 2000	W. B. BROWN			
10	NO SCALE	REV. 17	SEPT. 2000	W. B. BROWN			
11	NO SCALE	REV. 18	SEPT. 2000	W. B. BROWN			
12	NO SCALE	REV. 19	SEPT. 2000	W. B. BROWN			
13	NO SCALE	REV. 20	SEPT. 2000	W. B. BROWN			
14	NO SCALE	REV. 21	SEPT. 2000	W. B. BROWN			
15	NO SCALE	REV. 22	SEPT. 2000	W. B. BROWN			
16	NO SCALE	REV. 23	SEPT. 2000	W. B. BROWN			
17	NO SCALE	REV. 24	SEPT. 2000	W. B. BROWN			
18	NO SCALE	REV. 25	SEPT. 2000	W. B. BROWN			
19	NO SCALE	REV. 26	SEPT. 2000	W. B. BROWN			
20	NO SCALE	REV. 27	SEPT. 2000	W. B. BROWN			
21	NO SCALE	REV. 28	SEPT. 2000	W. B. BROWN			
22	NO SCALE	REV. 29	SEPT. 2000	W. B. BROWN			
23	NO SCALE	REV. 30	SEPT. 2000	W. B. BROWN			
24	NO SCALE	REV. 31	SEPT. 2000	W. B. BROWN			
25	NO SCALE	REV. 32	SEPT. 2000	W. B. BROWN			
26	NO SCALE	REV. 33	SEPT. 2000	W. B. BROWN			
27	NO SCALE	REV. 34	SEPT. 2000	W. B. BROWN			
28	NO SCALE	REV. 35	SEPT. 2000	W. B. BROWN			
29	NO SCALE	REV. 36	SEPT. 2000	W. B. BROWN			
30	NO SCALE	REV. 37	SEPT. 2000	W. B. BROWN			
31	NO SCALE	REV. 38	SEPT. 2000	W. B. BROWN			
32	NO SCALE	REV. 39	SEPT. 2000	W. B. BROWN			
33	NO SCALE	REV. 40	SEPT. 2000	W. B. BROWN			
34	NO SCALE	REV. 41	SEPT. 2000	W. B. BROWN			
35	NO SCALE	REV. 42	SEPT. 2000	W. B. BROWN			
36	NO SCALE	REV. 43	SEPT. 2000	W. B. BROWN			
37	NO SCALE	REV. 44	SEPT. 2000	W. B. BROWN			
38	NO SCALE	REV. 45	SEPT. 2000	W. B. BROWN			
39	NO SCALE	REV. 46	SEPT. 2000	W. B. BROWN			
40	NO SCALE	REV. 47	SEPT. 2000	W. B. BROWN			
41	NO SCALE	REV. 48	SEPT. 2000	W. B. BROWN			
42	NO SCALE	REV. 49	SEPT. 2000	W. B. BROWN			
43	NO SCALE	REV. 50	SEPT. 2000	W. B. BROWN			
44	NO SCALE	REV. 51	SEPT. 2000	W. B. BROWN			
45	NO SCALE	REV. 52	SEPT. 2000	W. B. BROWN			
46	NO SCALE	REV. 53	SEPT. 2000	W. B. BROWN			
47	NO SCALE	REV. 54	SEPT. 2000	W. B. BROWN			
48	NO SCALE	REV. 55	SEPT. 2000	W. B. BROWN			
49	NO SCALE	REV. 56	SEPT. 2000	W. B. BROWN			
50	NO SCALE	REV. 57	SEPT. 2000	W. B. BROWN			
51	NO SCALE	REV. 58	SEPT. 2000	W. B. BROWN			
52	NO SCALE	REV. 59	SEPT. 2000	W. B. BROWN			
53	NO SCALE	REV. 60	SEPT. 2000	W. B. BROWN			
54	NO SCALE	REV. 61	SEPT. 2000	W. B. BROWN			
55	NO SCALE	REV. 62	SEPT. 2000	W. B. BROWN			
56	NO SCALE	REV. 63	SEPT. 2000	W. B. BROWN			
57	NO SCALE	REV. 64	SEPT. 2000	W. B. BROWN			
58	NO SCALE	REV. 65	SEPT. 2000	W. B. BROWN			
59	NO SCALE	REV. 66	SEPT. 2000	W. B. BROWN			
60	NO SCALE	REV. 67	SEPT. 2000	W. B. BROWN			
61	NO SCALE	REV. 68	SEPT. 2000	W. B. BROWN			
62	NO SCALE	REV. 69	SEPT. 2000	W. B. BROWN			
63	NO SCALE	REV. 70	SEPT. 2000	W. B. BROWN			
64	NO SCALE	REV. 71	SEPT. 2000	W. B. BROWN			
65	NO SCALE	REV. 72	SEPT. 2000	W. B. BROWN			
66	NO SCALE	REV. 73	SEPT. 2000	W. B. BROWN			
67	NO SCALE	REV. 74	SEPT. 2000	W. B. BROWN			
68	NO SCALE	REV. 75	SEPT. 2000	W. B. BROWN			
69	NO SCALE	REV. 76	SEPT. 2000	W. B. BROWN			
70	NO SCALE	REV. 77	SEPT. 2000	W. B. BROWN			
71	NO SCALE	REV. 78	SEPT. 2000	W. B. BROWN			
72	NO SCALE	REV. 79	SEPT. 2000	W. B. BROWN			
73	NO SCALE	REV. 80	SEPT. 2000	W. B. BROWN			
74	NO SCALE	REV. 81	SEPT. 2000	W. B. BROWN			
75	NO SCALE	REV. 82	SEPT. 2000	W. B. BROWN			
76	NO SCALE	REV. 83	SEPT. 2000	W. B. BROWN			
77	NO SCALE	REV. 84	SEPT. 2000	W. B. BROWN			
78	NO SCALE	REV. 85	SEPT. 2000	W. B. BROWN			
79	NO SCALE	REV. 86	SEPT. 2000	W. B. BROWN			
80	NO SCALE	REV. 87	SEPT. 2000	W. B. BROWN			
81	NO SCALE	REV. 88	SEPT. 2000	W. B. BROWN			
82	NO SCALE	REV. 89	SEPT. 2000	W. B. BROWN			
83	NO SCALE	REV. 90	SEPT. 2000	W. B. BROWN			
84	NO SCALE	REV. 91	SEPT. 2000	W. B. BROWN			
85	NO SCALE	REV. 92	SEPT. 2000	W. B. BROWN			
86	NO SCALE	REV. 93	SEPT. 2000	W. B. BROWN			
87	NO SCALE	REV. 94	SEPT. 2000	W. B. BROWN			
88	NO SCALE	REV. 95	SEPT. 2000	W. B. BROWN			
89	NO SCALE	REV. 96	SEPT. 2000	W. B. BROWN			
90	NO SCALE	REV. 97	SEPT. 2000	W. B. BROWN			
91	NO SCALE	REV. 98	SEPT. 2000	W. B. BROWN			
92	NO SCALE	REV. 99	SEPT. 2000	W. B. BROWN			
93	NO SCALE	REV. 100	SEPT. 2000	W. B. BROWN			

5 JUNCTION BOX NTS

4 TYPICAL PIPE BEDDINGS NTS



ingenium
ENTERPRISES
PLANNING & ENGINEERING
220 ROSWELL ST.
SUITE 100
ALPHARETTA, GA 30009
770.457.8850
WWW.INGENIUMENTERPRISES.COM



DEL TACO
6791 GEORGIA HIGHWAY 85
RIVERDALE, GEORGIA

GUGGENHEIM
DEVELOPMENT
SERVICES, LLC
3000 INTERNET BOULEVARD,
SUITE 570
FRISCO, TEXAS 75034
PHONE: 214-872-4000

1 SANITARY CLEANOUT NTS

2 1,250 GALLON GREASE TRAP NTS

3 TYPICAL ASPHALT REPLACEMENT NTS

4 TYPICAL PIPE BEDDINGS NTS

5 JUNCTION BOX NTS

6 TYPICAL ASPHALT REPLACEMENT NTS

7 TYPICAL ASPHALT REPLACEMENT NTS

8 TYPICAL ASPHALT REPLACEMENT NTS

9 TYPICAL ASPHALT REPLACEMENT NTS

10 TYPICAL ASPHALT REPLACEMENT NTS

11 TYPICAL ASPHALT REPLACEMENT NTS

12 TYPICAL ASPHALT REPLACEMENT NTS

13 TYPICAL ASPHALT REPLACEMENT NTS

14 TYPICAL ASPHALT REPLACEMENT NTS

15 TYPICAL ASPHALT REPLACEMENT NTS

16 TYPICAL ASPHALT REPLACEMENT NTS

17 TYPICAL ASPHALT REPLACEMENT NTS

18 TYPICAL ASPHALT REPLACEMENT NTS

19 TYPICAL ASPHALT REPLACEMENT NTS

20 TYPICAL ASPHALT REPLACEMENT NTS

21 TYPICAL ASPHALT REPLACEMENT NTS

22 TYPICAL ASPHALT REPLACEMENT NTS

23 TYPICAL ASPHALT REPLACEMENT NTS

24 TYPICAL ASPHALT REPLACEMENT NTS

25 TYPICAL ASPHALT REPLACEMENT NTS

26 TYPICAL ASPHALT REPLACEMENT NTS

27 TYPICAL ASPHALT REPLACEMENT NTS

28 TYPICAL ASPHALT REPLACEMENT NTS

29 TYPICAL ASPHALT REPLACEMENT NTS

30 TYPICAL ASPHALT REPLACEMENT NTS

31 TYPICAL ASPHALT REPLACEMENT NTS

32 TYPICAL ASPHALT REPLACEMENT NTS

33 TYPICAL ASPHALT REPLACEMENT NTS

34 TYPICAL ASPHALT REPLACEMENT NTS

35 TYPICAL ASPHALT REPLACEMENT NTS

36 TYPICAL ASPHALT REPLACEMENT NTS

37 TYPICAL ASPHALT REPLACEMENT NTS

38 TYPICAL ASPHALT REPLACEMENT NTS

39 TYPICAL ASPHALT REPLACEMENT NTS

40 TYPICAL ASPHALT REPLACEMENT NTS

41 TYPICAL ASPHALT REPLACEMENT NTS

42 TYPICAL ASPHALT REPLACEMENT NTS

43 TYPICAL ASPHALT REPLACEMENT NTS

44 TYPICAL ASPHALT REPLACEMENT NTS

45 TYPICAL ASPHALT REPLACEMENT NTS

46 TYPICAL ASPHALT REPLACEMENT NTS

47 TYPICAL ASPHALT REPLACEMENT NTS

48 TYPICAL ASPHALT REPLACEMENT NTS

49 TYPICAL ASPHALT REPLACEMENT NTS

50 TYPICAL ASPHALT REPLACEMENT NTS

51 TYPICAL ASPHALT REPLACEMENT NTS

52 TYPICAL ASPHALT REPLACEMENT NTS

53 TYPICAL ASPHALT REPLACEMENT NTS

54 TYPICAL ASPHALT REPLACEMENT NTS

55 TYPICAL ASPHALT REPLACEMENT NTS

56 TYPICAL ASPHALT REPLACEMENT NTS

57 TYPICAL ASPHALT REPLACEMENT NTS

58 TYPICAL ASPHALT REPLACEMENT NTS

59 TYPICAL ASPHALT REPLACEMENT NTS

60 TYPICAL ASPHALT REPLACEMENT NTS

61 TYPICAL ASPHALT REPLACEMENT NTS

62 TYPICAL ASPHALT REPLACEMENT NTS

63 TYPICAL ASPHALT REPLACEMENT NTS

64 TYPICAL ASPHALT REPLACEMENT NTS

65 TYPICAL ASPHALT REPLACEMENT NTS

66 TYPICAL ASPHALT REPLACEMENT NTS

67 TYPICAL ASPHALT REPLACEMENT NTS

68 TYPICAL ASPHALT REPLACEMENT NTS

69 TYPICAL ASPHALT REPLACEMENT NTS

70 TYPICAL ASPHALT REPLACEMENT NTS

71 TYPICAL ASPHALT REPLACEMENT NTS

72 TYPICAL ASPHALT REPLACEMENT NTS

73 TYPICAL ASPHALT REPLACEMENT NTS

74 TYPICAL ASPHALT REPLACEMENT NTS

75 TYPICAL ASPHALT REPLACEMENT NTS

76 TYPICAL ASPHALT REPLACEMENT NTS

77 TYPICAL ASPHALT REPLACEMENT NTS

78 TYPICAL ASPHALT REPLACEMENT NTS

79 TYPICAL ASPHALT REPLACEMENT NTS

80 TYPICAL ASPHALT REPLACEMENT NTS

81 TYPICAL ASPHALT REPLACEMENT NTS

82 TYPICAL ASPHALT REPLACEMENT NTS

83 TYPICAL ASPHALT REPLACEMENT NTS

84 TYPICAL ASPHALT REPLACEMENT NTS

85 TYPICAL ASPHALT REPLACEMENT N