

BK 31 Pg 36

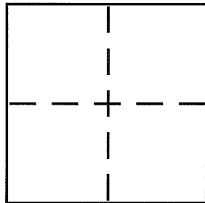
CORNER RECORD

Document Number CR 3463

City of OAKLAND

County of ALAMEDA, California

Brief Legal Description LOT 6, TRACT 1799 (38 M 26)



CORNER TYPE

Government Corner ☐ Control ☐
Meander ☐ Property ☒
Rancho ☐ Other ☐
Date of Survey AUGUST 22, 2008

COORDINATES (Optional)

N. _____
E. _____
Zone _____ NAD27 ☐ NAD83 ☐
NAD83 Epoch _____
Elev. _____
Vert. Datum: NGVD29 ☐ NAVD88 ☐
Meas. Units: Metric ☐ Imperial ☐

Corner - Left as found ☐ Found and tagged ☐ Established ☒ Reestablished ☐ Rebuilt ☐

Identification and type of corner found: Evidence used to identify or procedure used to establish or reestablish the corner:

FOUND CONCRETE MONUMENT PER (38 M 26)

A description of the physical condition of the monument as found and as set or reset:

SET BRASS TAG, LS 4961

SET 5/8" REBAR WITH PLASTIC CAP, LS 4961

SET 2" HUB WITH BRASS TAG, LS 4961

SURVEYOR'S STATEMENT

This Corner Record was prepared by me or under my direction in conformance with the Land Surveyor's Act on SEPTEMBER 2 2008.

Signed Robert J. Brunel P.L.S. or R.C.E. No. 4961

COUNTY SURVEYOR'S STATEMENT

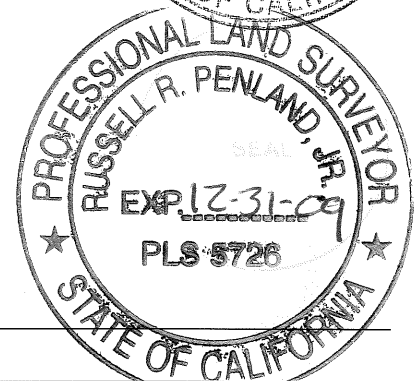
This Corner Record was received

and examined and filed

Signed Richard Land P.L.S. or R.C.E. No. 5726

Title COUNTY SURVEYOR

County Surveyor's Comment



CORNER RECORD

LOT 6, TRACT 1799
FILED MAY 15, 1957 (38 M 26)
OAKLAND, ALAMEDA COUNTY, CALIFORNIA

AUGUST 22, 2008

SCALE: 1" = 40'

TRACT 1800
(38 M 27)

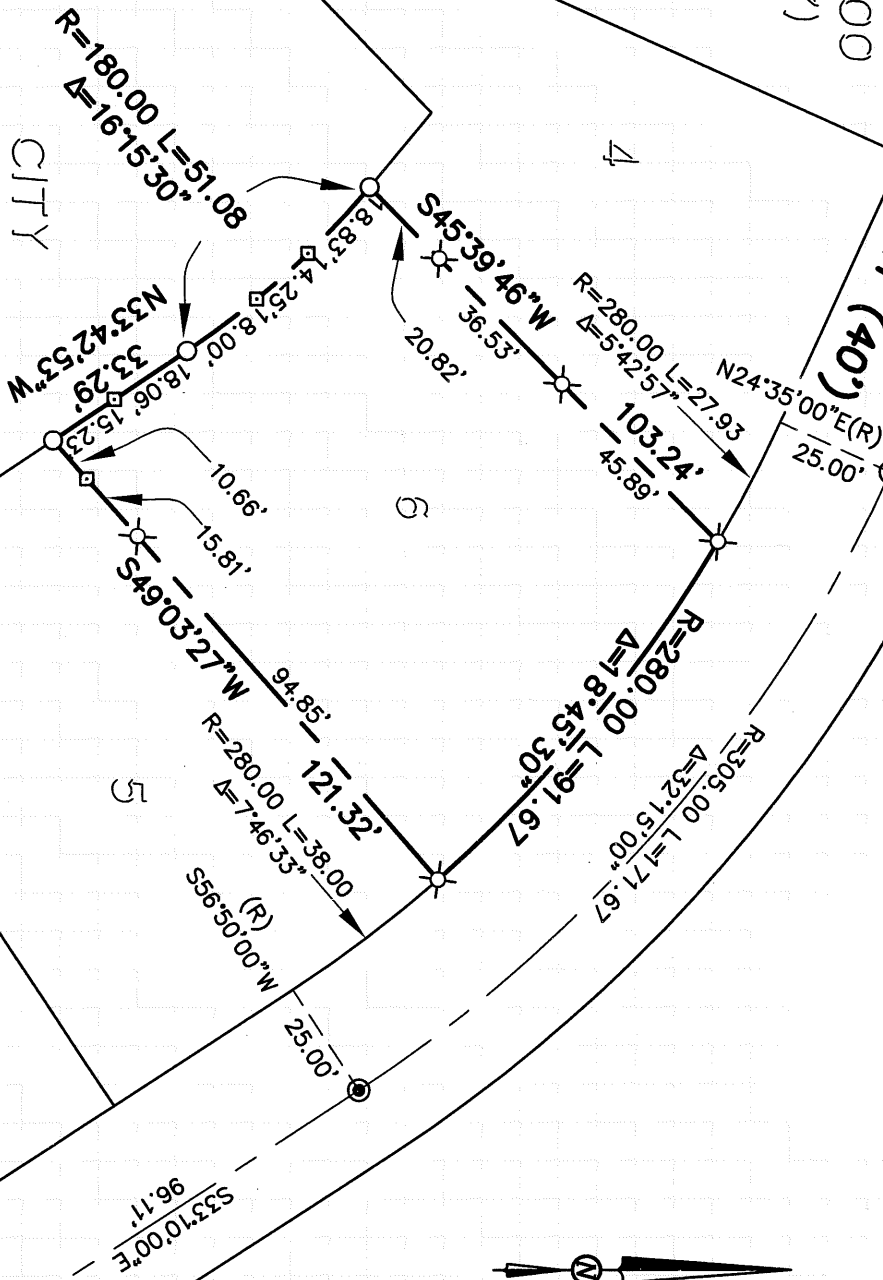
CASTLE PARK WAY (40')
N65°25'00"W
170.00'
25.00'

5

4

3

CITY



LEGEND

- FOUND CONCRETE MONUMENT PER (38 M 26)
- ⊗ SET BRASS TAG, LS 4961
- SET 5/8" REBAR WITH PLASTIC CAP, LS 4961
- ⊠ SET 2" HUB WITH BRASS TAG, LS 4961

MORAN ENGINEERING

BERKELEY, CALIFORNIA

CASTLE CR.DWG

JOB NO. 08-7365