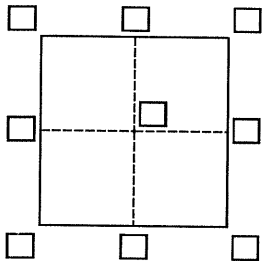


CORNER RECORD

Agency Index **BK 104 PG 76**
Document Number **CR 10504**

City of BERKELEY County of ALAMEDA, California
Brief Legal Description CITY OF BERKELEY MONUMENT B0580 AT INTER. FIFTH STREET & VIRGINIA STREET.



CORNER TYPE

Government Corner ☐ Control ☒
Meander ☐ Property ☐
Rancho ☐ Other ☐

Date of Survey April 24, 2017

COORDINATES (Optional)

N. E.

Elevation 6.88

Units Metric ☐ U.S. Survey Foot ☒

Horizontal Datum

Zone Epoch Date

Vertical Datum BERKELEY DATUM

☐ Complies with Public Resources Code §§8801-8819

☐ Complies with Public Resources Code §§8890-8902

PLS Act Ref.: ☐ 8765(d) ☒ 8771 ☐ 8773 ☐ Other:

Corner/
Monument: ☒ Left as found ☐ Established ☐ Rebuilt ☒ Pre-Construction
☐ Found and tagged ☐ Reestablished ☐ Referenced ☐ Post-Construction

Narrative of corner identified and monument as found, set, reset, replaced, or removed:

☐ See sheet #2 for description(s):

FOUND 2" DIA. BRASS DISC CITY MONUMNET #B0580 IN WELL WITH A PUNCH MARK AND STAMPED "CITY OF BERKELEY UNLAWFUL TO DEFACE", IN GOOD CONDITION. SET 4 CUT CROSSES IN CONCRETE AS REFERENCE POINTS, AS SHOWN ON EXHIBIT.

SURVEYOR'S STATEMENT

This Corner Record was prepared by me or under my direction in conformance with

the Professional Land Surveyors' Act on May 30, 2017

Signed [Signature] P.L.S. or R.C.E. No. L 7922



COUNTY SURVEYOR'S STATEMENT

This Corner Record was received 1 AUGUST 2017

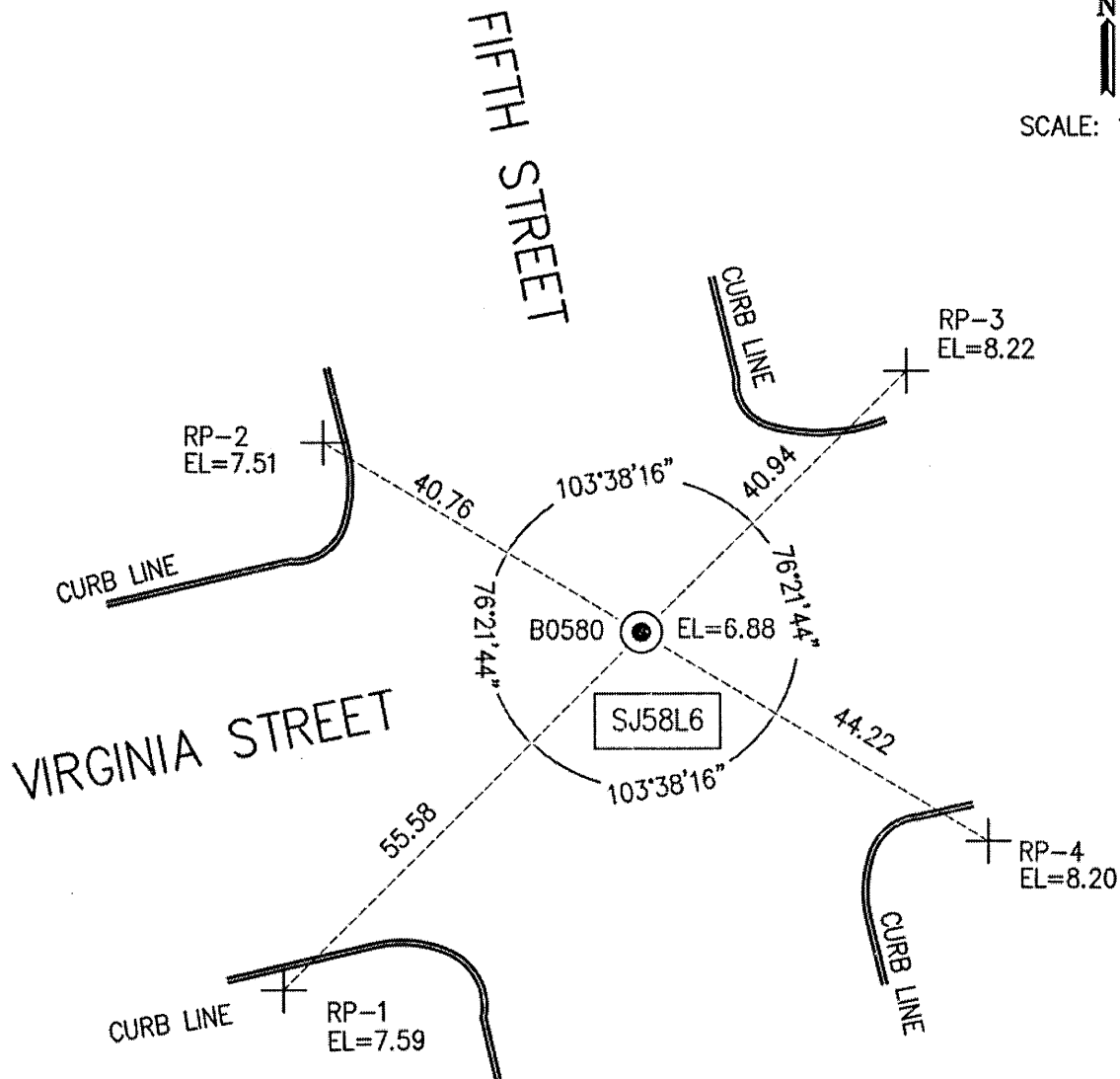
and examined and filed 1 FEBRUARY 2018

Signed Michael Rubner P.L.S. or R.C.E. No. 6843

Title COUNTY SURVEYOR

County Surveyor's Comment





N
SCALE: 1"=20'

LEGEND

- ⊙ FOUND 2" DIA. BRASS DISC CITY MONUMENT IN WELL
WITH A PUNCH MARK AND STAMPED "CITY OF BERKELEY UNLAWFUL TO DEFACE".
- ⊕ SET CUT CROSS IN CONCRETE
- REFERENCE LINE
- AA##A# ALAMEDA COUNTY MONUMENT ID

THE PURPOSE OF THIS RECORD IS TO DOCUMENT THE PERPETUATION OF FOUND MONUMENT(S) PURSUANT TO THE PLS ACT SECTION 8771. NO CLAIM IS MADE REGARDING THE CORRECTNESS OF THE POSITION(S) OF SAID MONUMENT(S), NOR THE DIMENSIONAL RELATIONSHIP TO STREET CENTERLINES OR PROPERTY BOUNDARIES.