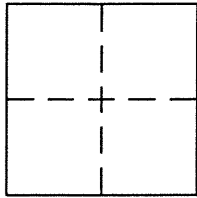


CORNER RECORDDocument Number CR 8067City of SAN LEANDROCounty of ALAMEDA, CaliforniaBrief Legal Description STREET MONUMENT ON GRAHAM WAY AS SHOWN ON MAP OF TRACT 924 (BK 30 PG 56)**CORNER TYPE**

Government Corner ☐ Control ☒
 Meander ☐ Property ☐
 Rancho ☐ Other ☐
 Date of Survey JANUARY 18, 2016

COORDINATES (Optional)

N. _____
 E. _____
 Zone _____ NAD27 ☐ NAD83 ☐
 NAD83 Epoch _____
 Elev. _____
 Vert. Datum: NGVD29 ☐ NAVD88 ☐
 Meas. Units: Metric ☐ Imperial ☐
 U.S. Survey Feet ☐

Corner -- Left as found ☐ Found and tagged ☐ Established ☐ Reestablished ☒ Rebuilt ☐

Identification and type of corner found: Evidence used to identify or procedure used to establish or reestablish the corner:

ORIGINAL MONUMENT WAS DESTROYED BY A PAVEMENT REHAB PROJECT, AND A NEW MONUMENT HAS BEEN
REESTABLISHED IN THE SAME LOCATION AS THE EXISTING MONUMENT PER THE TIES SHOWN ON CR 7695.
SET CITY OF SAN LEANDRO 2 5/8" BRASS DISC, STAMPED LS 9225.

A description of the physical condition of the monument as found and as set or reset:

FOUND CUT CROSSES(ON CURB), AS DEPICTED ON SHEET 2 OF THIS CORNER RECORD.

SURVEYOR'S STATEMENT

This Corner Record was prepared by me or under my direction in conformance with
 the Land Surveyor's Act on MARCH 25, 2016

Signed [Signature] P.L.S. or ~~R.C.E.~~ No. 9225

RODNEY A. STEWART II
 Kier & Wright, Civil Engineers & Surveyors, Inc., Pleasanton, CA
COUNTY SURVEYOR'S STATEMENT

This Corner Record was received 11 FEBRUARY, 2016

and examined and filed 30 MARCH, 2016

Signed [Signature] P.L.S. or ~~R.C.E.~~ No. 6843

Title COUNTY SURVEYOR

County Surveyor's Comment _____

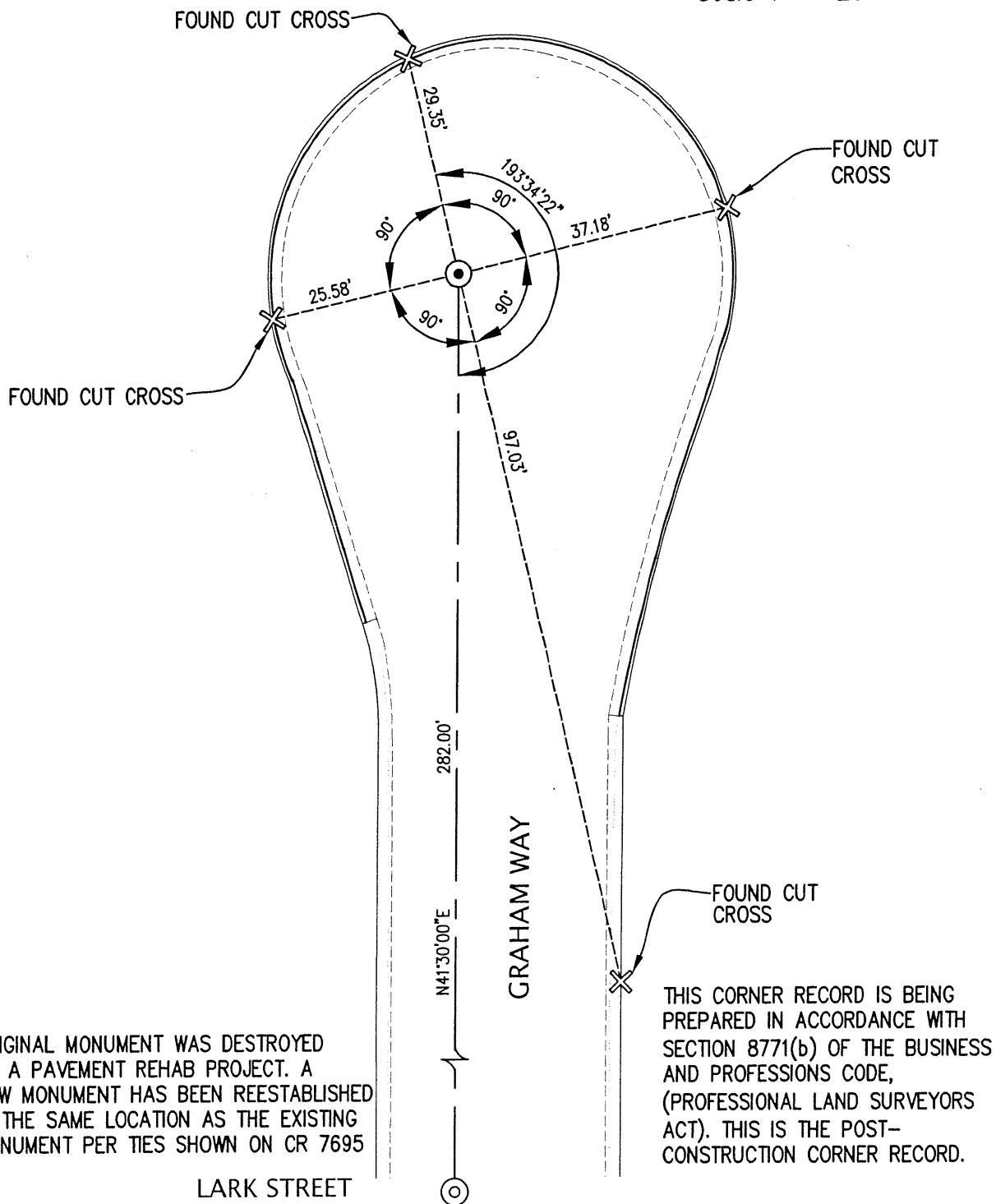


LEGEND:

- SET CITY OF SAN LEANDRO BRASS DISC, STAMPED LS 9225
- ✕ CUT CROSS
- === CURB & GUTTER
- FOUND 1/4" PIN IN CONCRETE



0 10' 20' 40'
Scale 1" = 20 ft



KW#A15598