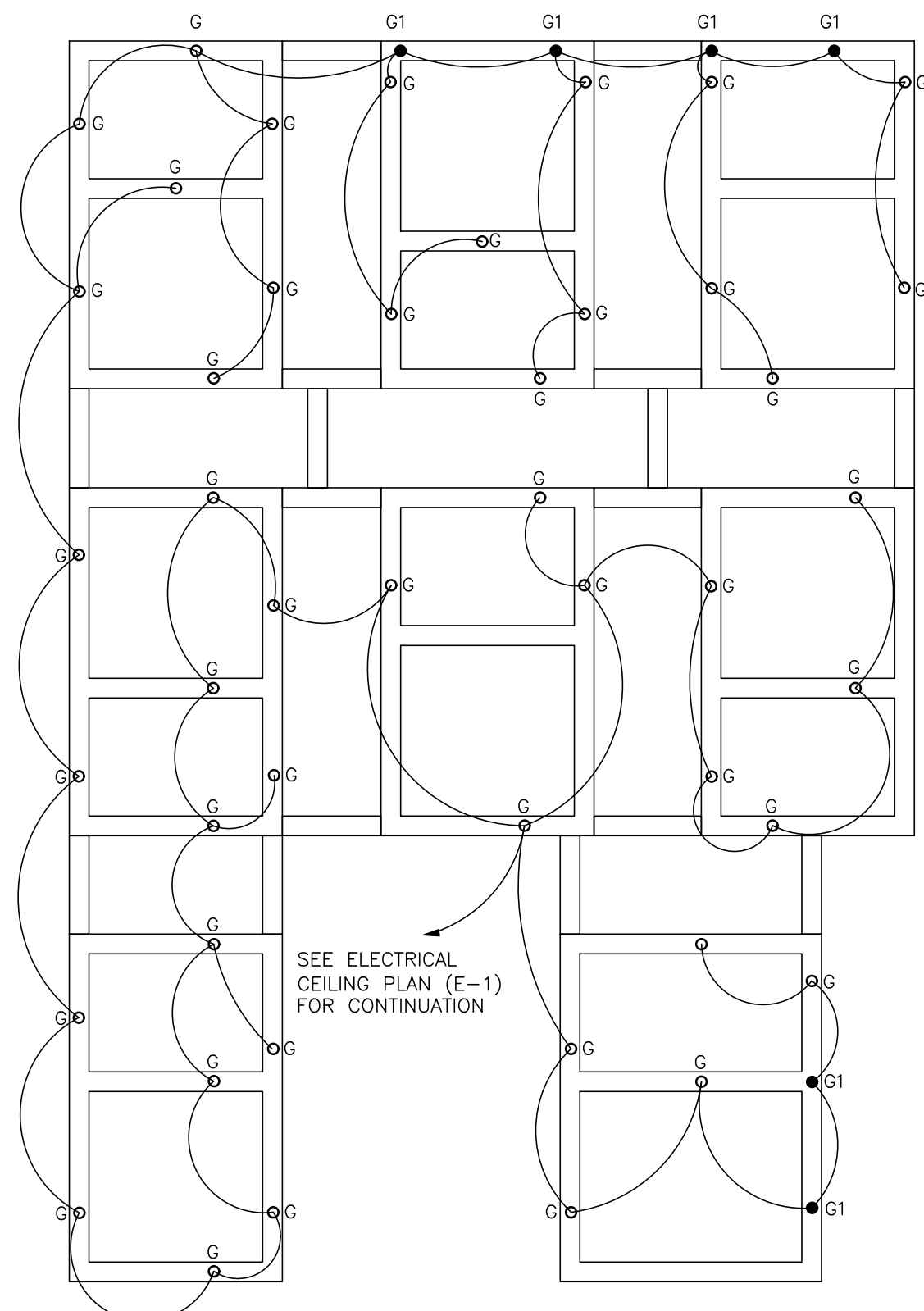
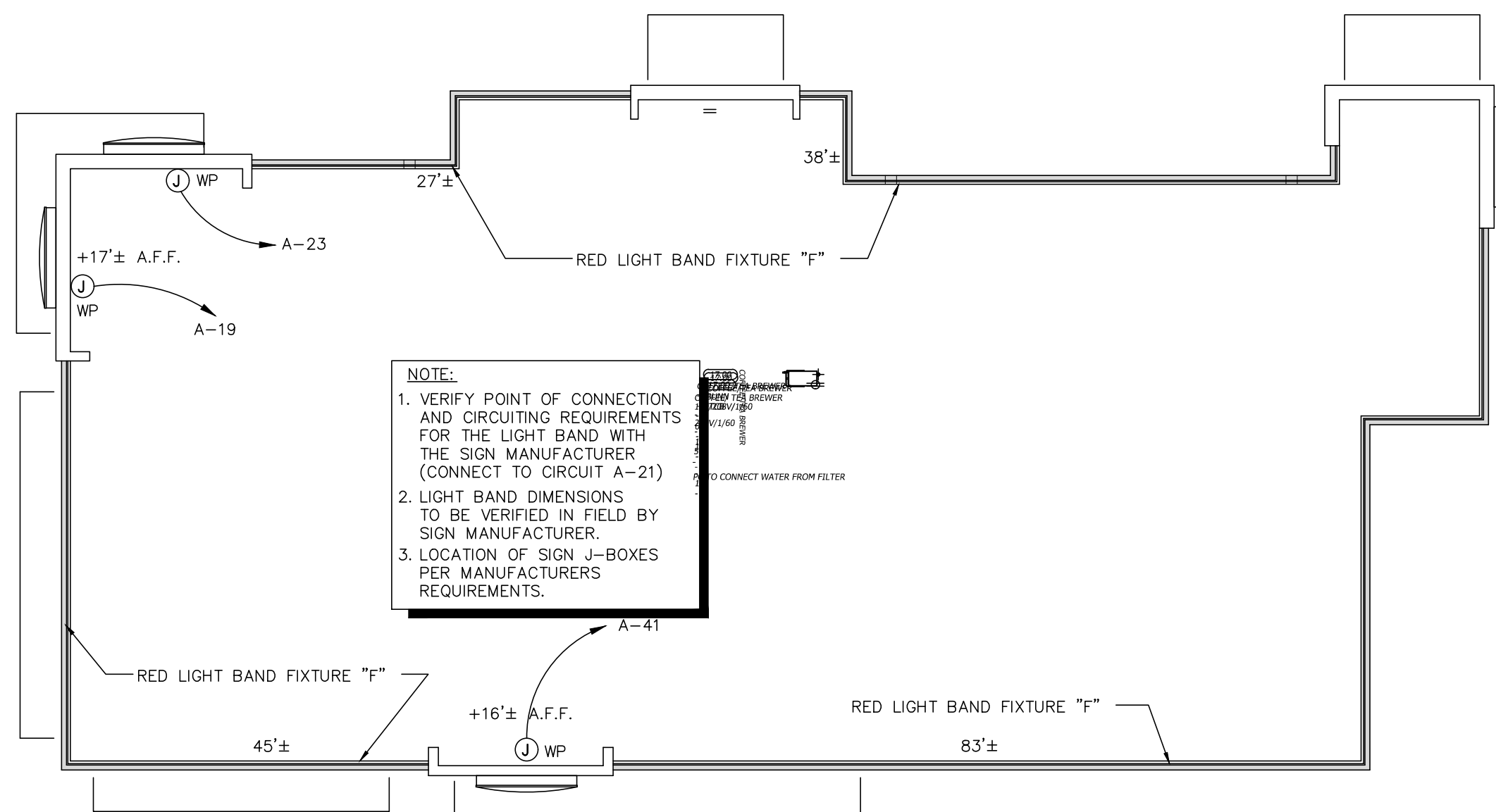


ELECTRICAL CEILING PLAN



TRELLIS POWER PLAN

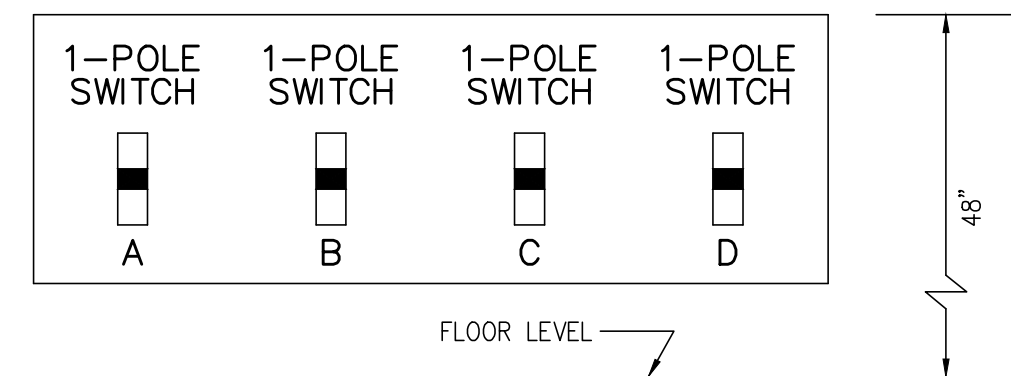
SCALE: 1/4" = 1'-0"



PARAPET LIGHT FIXTURE PLAN

SCALE: 1/8" = 1'-0"

SYMBOL LEGEND	
SYMBOL	DESCRIPTION
SWITCHES	
	TOGGLE SWITCH - SINGLE POLE
	TOGGLE SWITCH - THREE POLE



1 SWITCH BANK DETAIL

SCALE: NONE

NOTE: NUMBER OF SWITCHES REQUIRED MAY VARY BASED ON LIGHTING CONFIGURATION - VERIFY REQUIREMENTS.

GENERAL NOTES:

- REFER TO SHEET E-1.1 FOR LIGHT FIXTURE SPECIFICATIONS
- SEE ARCHITECTURAL REFLECTED CEILING PLAN FOR EXACT LOCATION AND MOUNTING HEIGHTS OF LIGHT FIXTURES. COORDINATE FIXTURE LOCATIONS WITH DECOR DRAWINGS.
- ALL WORK AND MATERIALS SHALL BE BY THE ELECTRICAL CONTRACTOR UNLESS NOTED OTHERWISE.
- MC CABLE ONLY PERMITTED FOR LIGHT WHIPS. ALL OTHER TO BE E.M.T CONDUIT IN CEILING AND WALLS - RIGID CONDUIT UNDER SLAB.
- PROVIDE JUNCTION BOXES AT LIGHT FIXTURES PER MANUFACTURERS REQUIREMENTS. (TYPICAL FOR ALL LIGHTING FIXTURES)
- WHERE TRUSSES ARE EXPOSED, RUN ALL ELECTRICAL CONDUITS ABOVE THE BOTTOM CHORD OF THE TRUSS.

KEYED NOTES:

- SWITCH BANK: REFERENCE DETAIL #1, THIS SHEET.
- WIRE WALL PACK THROUGH PHOTO CELL. ELECTRICAL CONTRACTOR TO PROVIDE "PARAGON" PHOTOCELL CW 201-00 MOUNTED ON ROOF FACING NORTH. MAKE ADJUSTMENTS FOR ANY AMBIENT LIGHT.
- PROVIDE HARDWARE FOR INSTALLATION IN GYPSUM BOARD CEILINGS.
- ELECTRICAL CONTRACTOR TO COORDINATE WITH THE DRIVE THROUGH SIGN SUPPLIER FOR EXACT ELECTRICAL REQUIREMENTS.
- ALL LIGHT FIXTURES OVER FOOD SERVICE AREA TO BE PROVIDED WITH LENS.
- ELECTRICAL WHIP THROUGH WALL BY CONTRACTOR. WHIP TO PENETRATE THROUGH CANOPY FRAMING. IF NOT POSSIBLE, PROVIDE LOW PROFILE JUNCTION BOX AND RIGID CONDUIT PAINTED TO MATCH BUILDING. COORDINATE J-BOX AND CONDUIT LOCATION WITH OWNER AND CANOPY VENDOR. CANOPY INSTALLER TO MAKE ELECTRICAL CONNECTION.

LIGHTING FIXTURE NOTES

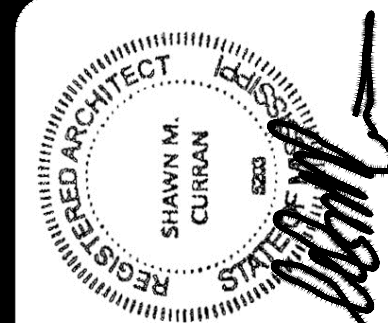
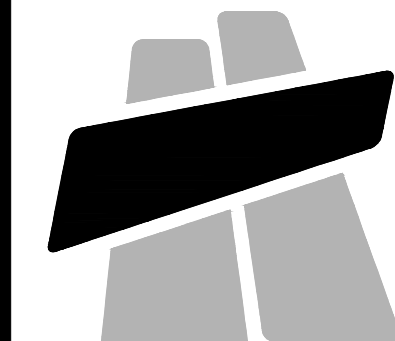
- ALL LIGHTING FIXTURES SHALL BE 120 VOLT UNLESS NOTED OTHERWISE.
- ALL ENCLOSED FLUORESCENT LIGHTING FIXTURES SHALL BE PROVIDED WITH BULBS SPECIFIED BY THE MANUFACTURER
- CONTRACTOR SHALL FURNISH AND INSTALL IN-LINE FUSE HOLDER AND FUSES IN ALL BALLASTED LIGHTING FIXTURES.
- CONTRACTOR SHALL CHECK AND VERIFY FIXTURE QUANTITY AND MAKE PROPER ADJUSTMENTS FOR ANY CHANGES IN PLAN SHOWN DUE TO ADDITIONAL REQUIREMENTS SUCH AS VESTIBULES, LOCAL CODES, ETC.
- SEE SITE LIGHTING DRAWING FOR AREA LIGHTING POLES SPECIFICATIONS AND DETAILS
- BALLASTS FOR FLOURESCENT FIXTURES SHALL BE TYPE 'P' WITH MINIMUM POWER FACTOR OF 90%. BALLASTS FOR SOFFIT LIGHTING SHALL BE RATED 50% FOR ZONE 'E', 0% FOR ZONES 'B', 'C', AND 'D', AND 20% FOR ZONE 'A'. ZONE 'A' LAMPS TO BE H/O.
- WHENEVER APPLICABLE, THE INCANDESCENT LIGHTING FIXTURES SHALL BE FURNISHED WITH ENERGY EFFICIENT INCANDESCENT LAMPS.

PROJECT #: 190420
RCC-60 TALL 20/20 IMAGE: NOVEMBER 2018 DESIGN RELEASE
Burger King
2413 NORTH HILLS STREET
MERIDIAN, MS 39305
LIGHTING PLAN



FRANCHISEE:
GPS HOSPITALITY
2100 RIVERDEE PARKWAY
SUITE 850
ATLANTA, GA 30328
PHONE: 770-738-8798

CURRAN
ARCHITECTURE
5719 LAWTON LOOP E. DR. #212
INDIANAPOLIS, IN 46216
O :: 317.288.0681
F :: 317.288.0753



DATE: 01-27-2020
CHECKED BY: SMC
REVISION
NO. DATE