

PLUMBING FIXTURE SCHEDULE				
A	TANK WATER CLOSET (HANDICAPPED): AMERICAN STANDARD 2467.016, FLUSH TANK WITH TRIP LEVER ON OPEN SIDE OF TOILET. FLOOR MOUNTED, STANDARD WHITE FINISHED, ELONGATED FRONT BOWL. PRESSURE ASSISTED 1.6 GPF. RIM 16 1/2" A.F.F. AM. STD 4142.600 TANK COVER LOCKING DEVICE. AM. STD. 5901.100.020 OPEN FRONT SEAT LESS COVER.			
B	LAVATORY: ZURN MODEL Z5344, 20"x18" WALL HUNG LAVATORY, VITREOUS CHINA, WITH 4" CENTER FAUCET HOLES & ZURN Z-1231 CONCEALED ARM CARRIER. FAUCET: TOTO TEL101 - D10ET STANDARD ECOPOWER FAUCET. SENSOR, 1.0 GPM, 0.18gpc. 4" COVER PLATE #THP3158RCP. THERMOSTATIC MIXING VALVE: TOTO TL11TOR. PROVIDED & INSTALLED BY CONTRACTOR CONTACT CHRISTINE MCALEXANDER 800-459-7099 PANDAR@HJCINC.COM			
C	NOT USED			
D	FLOOR DRAIN: ZURN # ZB415-B5 CAST IRON DRAIN WITH 5" ROUND POLISHED BRONZE TOP. MEMBRANE FLASHING CLAMP. PROVIDE 3" OUTLET WITH P-TRAP. CLEAN AND POLISH AFTER INSTALLATION. REFER TO DETAIL 17/P-500. PROVIDE TRAP PRIMER			
D1	FLOOR DRAIN: ZURN # ZB415-B5 CAST IRON DRAIN WITH 5" ROUND POLISHED BRONZE TOP. MEMBRANE FLASHING CLAMP. PROVIDE 3" OUTLET WITH P-TRAP. CLEAN AND POLISH AFTER INSTALLATION. REFER TO DETAIL 9/P-500. PROVIDE TRAP PRIMER			
E	FLOOR SINK: ZURN # Z1901-31, RECEPTOR WITH 12" SQUARE TOP x 8" DEEP CAST IRON BODY WITH ACID-RESISTING ENAMEL INTERIOR. RECEPTOR PROVIDED WITH ALUMINUM DOME STRAINER WITHOUT GRATE.			
E1	FLOOR SINK: ZURN # Z1901-2-32, RECEPTOR WITH 12" SQUARE TOP x 8" DEEP CAST IRON BODY WITH ACID-RESISTING ENAMEL INTERIOR. RECEPTOR PROVIDED WITH PORCELAIN ENAMEL LOOSE-SET 1/2 GRATE AND ALUMINUM DOME STRAINER.			
F	NOT USED			
G	FLOOR DRAIN WITH FUNNEL: ZURN # ZB415-AR-4 ACID RESISTING EPOXY COATED CAST IRON DRAIN WITH 5" ROUND POLISHED BRONZE TOP, 4" FUNNEL. PROVIDE 2" OUTLET WITH P-TRAP. CLEAN AND POLISH AFTER INSTALLATION. REFER TO DETAIL. PROVIDE TRAP PRIMER			
H	NOT USED			
I	GREASE INTERCEPTOR: JENSEN JP1000EE-G, 1000 GALLONS, 4" INLET AND OUTLET. TRAFFIC COVER. REFER TO CIVIL DRAWINGS FOR LOCATION. THE DESIGN OF THE GREASE INTERCEPTOR SHALL BE APPROVED BY LOCAL CITY REQUIREMENT.			
J	WATER HAMMER ARRESTER: J. R. SMITH #5020, 1" NIPPLE OR EQUAL			
K	PROVIDE ZURN 375ST STAINLESS STEEL REDUCED PRESSURE PRINCIPLE ASSEMBLY AT BAG-N-BOX. REFER TO 15/P-500			
L	HOSE BIBB: ACCORN #8121 WITH VACUUM BREAKER, CHROME PLATED.			
L1	HOSE BIBB: WOODFORD MB65 FREEZELESS COMMERCIAL CONCEALED BOX TYPE WALL HYDRANT IN SECURE LOCK STYLE MODULAR BOX. SINGLE CHECK ANTI SIPHON VACUUM BREAKER. CHROME HEAD, BRASS VALVE BODY HYDRANT WITH 3/4" HOSE CONNECTION 18" A.F.F.			
M	TRENCH DRAIN: ZURN #Z-886-RFS, 6" WIDE x 80" LONG. TRENCH DRAIN SYSTEM MODULAR CHANNEL SECTIONS SHALL BE MADE OF HIGH DENSITY POLYETHYLENE WITH INTERLOCK ENDS, A RADIUS BOTTOM AND REINFORCED STAINLESS STEEL SLOTTED GRATE.			
N	PROVIDE WATTS SD-3 DUAL CHECK VALVE WITH ATMOSPHERIC PORT AND STRAINER AFTER EACH BV.			
O	FREEZE PROOF ROOF HYDRANT: WOODFORD MODEL: SRH-MS			
P1	MOP SINK: GSW # SE2424FM 24"x24" STAINLESS STEEL UNIT, 18 GA. STAINLESS STEEL CHICAGO FAUCET #697 WITH INTEGRAL STOPS IN SHANKS, WALL BRACE, HOSE THREADS, PAIL HOOK, VACUUM BREAKER, ROUGH BRASS FINISH, THREE FOOT RUBBER HOSE. 3" TRAPPED AND VENTED WASTE CONNECTION. PROVIDE 3/4" HW & CW RI 8" OC. 36" A.F.F. PROVIDE 3/4" CW HOSE BIBB, ACCORN #8121 W/ VACUUM BREAKER, 48" A.F.F. FOR CHEMICAL CONNECTION.			
P3	TANKLESS GAS WATER HEATER SYSTEM. MFG: RINNAI MTO-00247(2 CU199), 398,000 BTU/HR GAS INPUT, 7.7 GPM @ 100" RISE. SEE PIPING DIAGRAM ON SHEET P-400. INCLUDE ALL PIPING, VENTING, WALL MOUNTING BRACKET AND ANY ACCESSORIES NECESSARY TO COMPLETE SYSTEM INSTALL. CONTACT: RICO VIGLIETTI, RINNAI AMERICA CORPORATION CORPORATE ACCOUNTS MANAGER (901 440-7389 JVIGLIETTE@RINNAI.US			
CP	HW CIRC. PUMP - MFG: GRUNDFOS, UP 15-19BS, 1/25 HP, 115 VOLT, 2 GPM @ 7' HEAD OR APPROVED EQUIVALENT.			
RD	RD - ROOF DRAIN: J.R. SMITH #1010 CAST IRON ROOF DRAINS WITH FLASHING COLLAR AND CAST IRON DOME. FURNISH EXTENSION (SUFFIX-E) FOR INSULATED ROOFS. SUMP RECEIVER (SUFFIX-R) AND UNDER-DECK CLAMP (SUFFIX-C) FOR ALL BUT POURED-IN-PLACE INSTALLATIONS. OUTLET CONNECTION TYPE SHALL BE COMPATIBLE WITH PIPING SYSTEM.			
OD	OD - OVERFLOW ROOF DRAIN: J.R. SMITH #1070 WITH SAME FEATURES AS DESCRIBED FOR "ROOF DRAINS". STANDPIPES SHALL BE ADJUSTED AND SECURED SO THAT AFTER THE INSTALLATION OF THE DRAIN ASSEMBLY, THE TOP OF THE STANDPIPE SHALL BE (2") ABOVE THE ADJACENT ROOF SURFACE.			
40B	FAUCET FOR CHEM: T&S BRASS MODEL #B-0669-POL. PROVIDED BY G.C.			

FIXTURE BRANCH SCHEDULE				
FIXTURE	COLD WATER	HOT WATER	WASTE	VENT
WATER CLOSET (HANDICAPPED)	1/2"	--	4"	2"
LAVATORY	1/2"	1/2"	2"	1 1/2"
2 AND 3 - COMP SINK	1/2"	1/2"	3"	2"
HAND SINK	1/2"	1/2"	2"	1 1/2"
MOP SINK (J.S.)	1/2"	1/2"	3"	2"
EQUIPMENT	1/2"	--	--	--
FLOOR DRAIN/SINK	--	--	2" OR 3"	2"

KITCHEN EQUIPMENT SCHEDULE	
ITEMS IN THIS SCHEDULE ARE FURNISHED BY THE OWNER AND INSTALLED BY THE GENERAL CONTRACTOR UNLESS NOTED OTHERWISE AND CONNECTED TO THE PLUMBING UTILITIES BY THE PLUMBING CONTRACTOR, WHO SHALL INSTALL ALL PLUMBING DEVICES FURNISHED WITH EQUIPMENT.	
WASTE: FS = FLOOR SINK. CFD = CONDENSATE FLOOR DRAIN. VB = VACUUM BREAKER. FLEX = A SIX FOOT COILED LENGTH OF FOOD QUALITY FLEXIBLE REINFORCED PLASTIC TUBING CONNECTED FROM THE ROUGH IN TO THE EQUIPMENT WITH ALL REQUIRED ADAPTERS AND HOSE CLAMPS.	
ALL PIPES MUST MAINTAIN A MINIMUM CLEARANCE OF 6" AFF AND MUST BE WELL SUPPORTED. NO FLOOR SUPPORTS ALLOWED.	
4A	SERVING COUNTER MOUNTED SODA MACHINE: IF PROVIDED, SODA MACHINE INSTALLER TO PROVIDE DRAIN LINES FROM ICE BIN AND SODA MACHINE TO FS WITH 1" AIR GAP. DRAIN LINE TO BE INSULATED. WATER TO SODA MACHINE TO BE PROVIDED THROUGH BUNDLE FROM FILTER AND RACK IN KITCHEN BY SODA MACHINE INSTALLER. NO DETAIL TO BE INSTALLED. MACHINE TO SET DIRECTLY ON COUNTER.
4AB	BEVERAGE COUNTER MOUNTED SODA MACHINE WITH ICE MACHINE: PROVIDE 3/4" COPPER PIPE IW FROM COUNTER TROUGH DRAIN TO FS WITH 1" AIR GAP. INSULATE. WATER TO SODA MACHINE TO BE PROVIDED THROUGH BUNDLE FROM FILTER AND RACK IN KITCHEN BY SODA MACHINE INSTALLER. NO DETAIL TO BE INSTALLED. MACHINE TO SET DIRECTLY ON COUNTER.
4F	WATER FILTER: PROVIDE 1/2" CW AT 96" AFF WITH BV. PROVIDE FLEX AND REDUCED PRESSURE STAINLESS STEEL BACKFLOW PREVENTOR, OR OTHER DEVICE AS REQUIRED BY LOCAL CODE. INSTALL OWNER PROVIDED WATER FILTER AND MAKE CONNECTIONS TO BACKFLOW PREVENTOR AND WATER SUPPLY. PROVIDE ALL REQUIRED FITTINGS TO ALLOW SODA MACHINE INSTALLER TO HOOK UP BOOSTER PUMP TO WATER FILTER. REFER TO DETAIL 15/P-500.
6B	22"D REAR COUNTER WITH HAND SINK, PROVIDE 1/2" CW AND 1/2" HW AT 24" AFF AND 8" OC WITH CHROME-PLATED, 1/2 TURN BALL VALVES. CONNECT TO OWNER SUPPLIED FAUCETS WITH METAL FLEX PROVIDE 2" DRAIN PIPE WITH P" TRAP AND WALL MOUNTED CLEAN-OUT. ALL EXPOSED DRAIN PIPES AND FITTINGS TO BE CHROME PLATED, NOT P.V.C.
9D	ICE TEA MAKER: PROVIDE 1/2" CW @ 24" A.F.F. PROVIDE ALL REQUIRED FITTINGS TO ALLOW ICE TEA INSTALLER TO HOOK UP ONE BV, OTHER BV FOR OTHER EQUIPMENT.
10J	SODA MACHINE MOUNTED ICE MACHINE: PROVIDE 1/2" CW AT 24" A.F.F. WITH BV. PROVIDE ALL REQUIRED FITTINGS TO ALLOW ICE MACHINE INSTALLER TO HOOK UP ICE MACHINE TO CW.
20A	CHINESE RANGE: PROVIDE 1/2" CW AT 10" AFF WITH BV. PROVIDE PRESSURE TYPE VB OR OTHER BACKFLOW DEVICE AS REQUIRED BY LOCAL CODE, AND CONNECT TO OWNER SUPPLIED FAUCETS. PROVIDE 2" COPPER PIPE IW TO FS WITH 2" AIR GAP. PROVIDE 1/2" GAS SUPPLY AT 9" AFF WITH EASILY ACCESSIBLE SHUT-OFF VALVE. INSTALL OWNER SUPPLIED GAS REGULATOR AND ADJUST GAS LEVEL TO BURNERS.
20B	CHINESE RANGE: PROVIDE 1/2" CW AT 10" AFF WITH BV. PROVIDE PRESSURE TYPE VB OR OTHER BACKFLOW DEVICE AS REQUIRED BY LOCAL CODE, AND CONNECT TO OWNER SUPPLIED FAUCETS. PROVIDE 2" COPPER PIPE IW TO FS WITH 2" AIR GAP. PROVIDE 1/2" GAS SUPPLY DOWN TO 10" AFF REDUCE TO 3/4" AT EQUIPMENT CONNECTION WITH EASILY ACCESSIBLE SHUT-OFF VALVE. INSTALL OWNER SUPPLIED GAS REGULATOR AND ADJUST GAS LEVEL TO BURNERS.
20Q	CHINESE RANGE: PROVIDE 1/2" CW AT 10" AFF WITH BV. PROVIDE PRESSURE TYPE VB OR OTHER BACKFLOW DEVICE AS REQUIRED BY LOCAL CODE, AND CONNECT TO OWNER SUPPLIED FAUCETS. PROVIDE 2" COPPER PIPE IW TO FS WITH 2" AIR GAP. PROVIDE 1/2" GAS SUPPLY DOWN TO 10" AFF REDUCE TO 3/4" AT EQUIPMENT CONNECTION WITH EASILY ACCESSIBLE SHUT-OFF VALVE. INSTALL OWNER SUPPLIED GAS REGULATOR AND ADJUST GAS LEVEL TO BURNERS.
21B	FRYER: PROVIDE 1/2" GAS SUPPLY DOWN TO 14" AFF. THEN TRANSITION TO 1" WITH 90° ANGLE AND SHUT OFF VALVE. PROVIDE ALL REQUIRED FITTINGS AND INSTALL OWNER SUPPLIED QUICK DISCONNECT FLEXIBLE PIPE AND CONNECT TO UNITS WITH 90° ANGLE. SEE DETAIL ON P-500
23E	GRIDDLE: PROVIDE 3/4" GAS SUPPLY DOWN TO 20" AFF WITH EASILY ACCESSIBLE SHUT-OFF VALVE. PROVIDE ALL REQUIRED FITTINGS. CONNECT TO UNIT WITH OWNER SUPPLIED QUICK DISCONNECT (3/4"x48", (1) SWIVEL KIT)
25A	RICE COOKER: PROVIDE 1/2" GAS SUPPLY AT 30", AND 3/4" GAS SUPPLY AT 10" AFF WITH SHUT OFF VALVES. ONE FOR EACH UNIT. PROVIDE ALL REQUIRED FITTINGS AND INSTALL OWNER SUPPLIED QUICK DISCONNECT FLEXIBLE PIPE AND CONNECT TO UNITS.
31	WALK-IN COOLER: PROVIDE 1" COPPER PIPE IW FROM DRAIN PAN ON EACH UNIT TO FLOOR DRAIN WITH P" TRAP AND 1" AIR GAP. MOUNT ALL PIPES WITHIN WALK-IN BOX WITH 1" HOLD-OFF SUPPORTS.
32	WALK-IN FREEZER: PROVIDE 1" COPPER PIPE IW FROM DRAIN PAN ON EACH UNIT TO FLOOR DRAIN WITH P" TRAP AND 1" AIR GAP. MOUNT ALL PIPES WITHIN WALK-IN BOX WITH 1" HOLD-OFF SUPPORTS. PROVIDE HEAT TRACE REFER TO ELECTRICAL DRAWING.
40A	POT SINK: PROVIDE 1/2" CW AND 1/2" HW AT 14" AFF AND 8" OC WITH BVS & CV. CONNECT TO OWNER SUPPLIED FAUCET WITH COPPER PIPING. PROVIDE 2" COPPER PIPE IW (MANIFOLD ALL COMPARTMENT DRAINS INTO ONE LINE) TO FS WITH 2" AIR GAP. OR, IF REQUIRED BY LOCAL CODE, INSTALL 2" COPPER PIPE DIRECTLY TO SEWER SYSTEM. INSTALL OWNER SUPPLIED LEVER DRAIN STOPS. SEE DETAIL ON SHEET P-500.
41B	SINGLE BOWL PREP SINK: PROVIDE 1/2" CW AND 1/2" HW AT 14" AFF AND 8" OC WITH BVS. CONNECT TO OWNER SUPPLIED FAUCETS WITH COPPER PIPING. PROVIDE 2" COPPER PIPE IW TO FS WITH 2" AIR GAP. OR, IF REQUIRED BY LOCAL CODE, INSTALL 2" COPPER PIPE DIRECTLY TO SEWER SYSTEM. INSTALL OWNER SUPPLIED LEVER DRAIN STOPS.
41C	SINGLE BOWL PREP SINK: PROVIDE 1/2" CW AND 1/2" HW AT 14" AFF AND 8" OC WITH BVS. CONNECT TO OWNER SUPPLIED FAUCETS WITH COPPER PIPING. PROVIDE 2" COPPER PIPE IW TO FS WITH 2" AIR GAP. OR, IF REQUIRED BY LOCAL CODE, INSTALL 2" COPPER PIPE DIRECTLY TO SEWER SYSTEM. INSTALL OWNER SUPPLIED LEVER DRAIN STOPS.
45A	HAND SINK: PROVIDE 1/2" CW AND 1/2" HW AT 24" AFF AND 8" OC WITH CHROME-PLATED, 1/2 TURN BALL VALVES. CONNECT TO OWNER SUPPLIED FAUCETS WITH METAL FLEX PIPING. PROVIDE 2" DRAIN PIPE WITH P" TRAP AND WALL MOUNTED CLEAN-OUT. ALL EXPOSED DRAIN PIPES AND FITTINGS TO BE CHROME PLATED, NOT P.V.C.

PIPE MATERIAL SCHEDULE		
SERVICE	UNDERGROUND	ABOVE GROUND
COLD & HOT WATER	TYPE "K" OR "L" HARD DRAWN COPPER TUBE	PEX
SANITARY WASTE	*SCH. 40 PVC	*SCH. 40 PVC
SANITARY VENT	*SCH. 40 PVC	*SCH. 40 PVC
GAS	---	BLACK STEEL, SCHEDULE 40
INDIRECT DRAIN	---	HARD DRAWN COPPER TUBE TYPE "M"
*SCH. 40 PVC IS PREFERRED IF APPROVED BY AUTHORITY HAVING JURISDICTION. PROVIDE SCHEDULE 40 PVC FOR ALL WASTE VENT PIPING & FITTINGS.		

- PLUMBING KEY NOTES
- SODA CONDUIT: PROVIDE 6" PVC CONDUIT BELOW FLOOR FROM THE SIDE OF SODA STORAGE RACK TO SODA DISPENSER PER DETAIL #4 ON SHEET P-500.
 - CONDENSATE: ROUTE SHARED CONDENSATE LINE THROUGH WALK-IN COOLER. DO NOT RUN THROUGH WALK-IN FREEZER. PROVIDE 1" INSULATED CONDENSATE DRAIN PIPE FROM THE EVAPORATIVE COIL. DISCHARGE TO FLOOR SINK OR MOP SINK WITH AIR GAP OF TWICE PIPE DIAMETER. INSTALL AT MINIMUM 76" HEIGHT A.F.F. REFER TO DETAIL #2 ON SHEET P-500.
 - PROVIDE TRAP PRIMER FOR FLOOR SINK. SEE DETAIL 17/P-500.
 - RDL & ODL LINES DN. IN WALL. TERMINATE ODL THRU WALL AS CLOSE TO BOTTOM PLATE AS POSSIBLE. EXTEND 1/2" PAST EFIS. WATER PROOF SEAL ALL AROUND. TERMINATE ODL WITH 4" PVC LAMB'S TONGUE NOZZLE. COLOR ANTIQUE BRONZE, ARKMAN MODEL #PDN-4. TIE RDL TO STORM SEWER UNDERGROUND. SEE CIVIL PLANS FOR CONTINUATION.
 - COMBINATION WASTE/VENT
 - LAV. TAILPIPE WITH TRAP PRIMER, RUN 1/2" CW BELOW FLOOR TO FLOOR DRAIN, SEE DETAIL #9 ON PLAN P-500.
 - (AAV) STUDOR MINI-VENT AIR ADMITTANCE VALVE- INSTALL PER MANUFACTURERS INSTALLATION INSTRUCTIONS.

FIXTURE UNIT SCHEDULE						
ITEM	FIXTURE	QTY	WATER FU		SEWER FU	
			EACH	TOTAL	EACH	TOTAL
A	WATER CLOSET	2	5	10	4	8
B	LAVATORY	2	2	4	1	2
D D1	FLOOR DRAIN 3" TRAP	6	—	—	5	30
E E1	FLOOR SINK 3" TRAP	9	—	—	5	45
P1	MOP SINK	1	3	3	2	2
G	FLOOR DRAIN W/ FUNNEL 2" TRAP	1	—	—	3	3
L L1	HOSE BIBB	3	4	12	—	—
M	TRENCH DRAIN 3" TRAP	1	—	—	5	5
4F	FILTER SYSTEM	1	1	1	FS	—
9D	ICE TEA BREWER	2	1	2	FS	—
10J	400 LB ICE MACHINE	2	1	2	FS	—
20A	CHINESE RANGE	1	2	2	FS	—
20Q	CHINESE RANGE	1	2	2	FS	—
40A	POT SINK (3.COMP.)	1	4	4	FS	—
41B	PREP. SINK (1.COMP.)	2	4	8	FS	—
45A	HAND SINK (WALL MOUNT)	3	2	6	1	3
TOTAL			54		98	

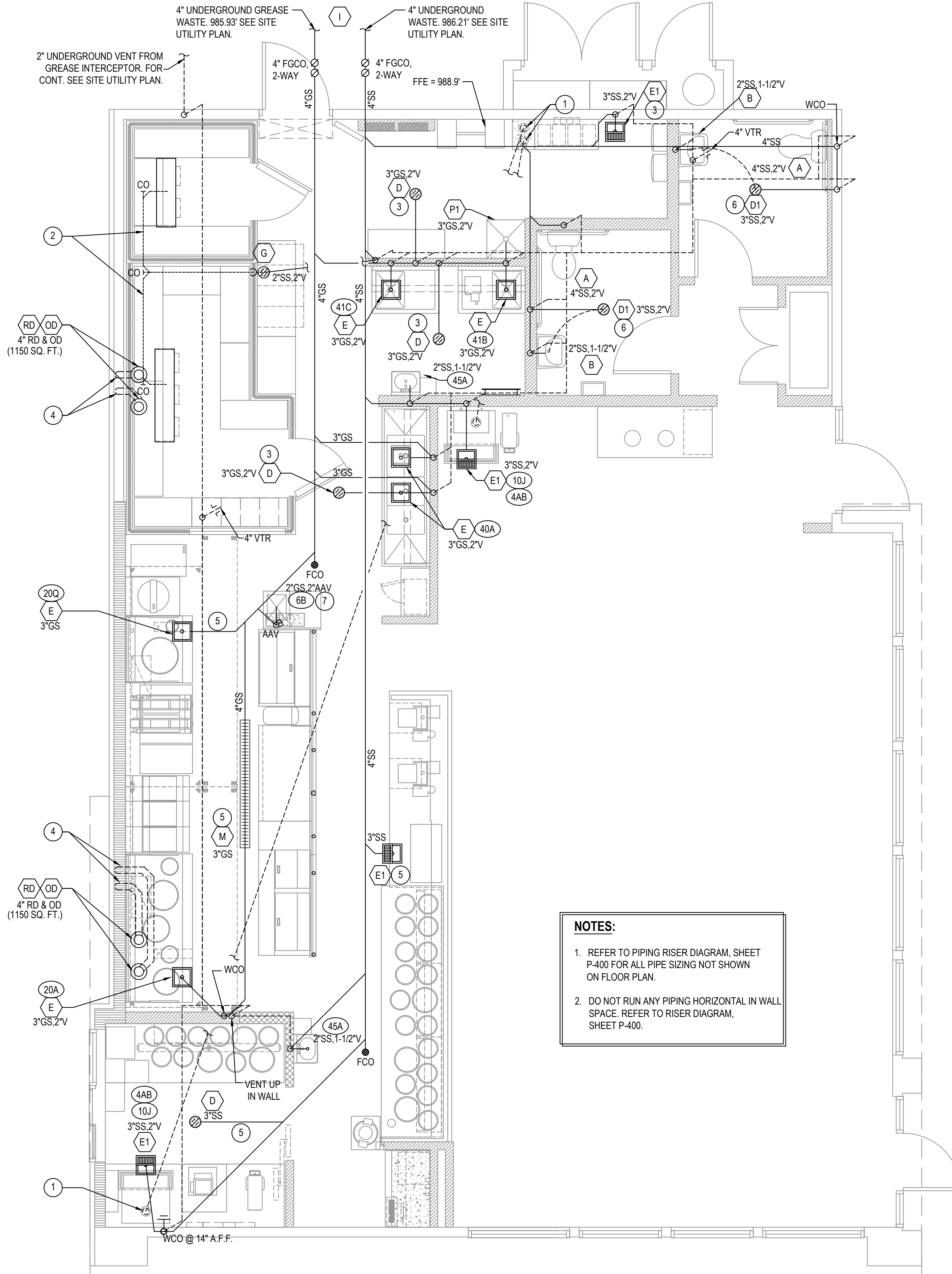
FIXTURE UNIT SUMMARY		
SERVICE	TOTAL F.U.	
DOMESTIC WATER	54	
SANITARY SEWER	98	
SERVICE REQUIREMENTS		
SERVICE	SIZE MAIN	CAPACITY
DOMESTIC WATER	1-1/2 INCH	32 GPM
SANITARY SEWER	4 INCH	98 F.U.
FUEL GAS	3 INCH	2,439 CFH
FIRE PROTECTION	INCH	GPM

WATER PIPE SIZING CHART (COLD WATER)					
PIPE SIZE	GPM	VELOCITY FT/SEC	FIXTURE UNITS		
			F - TANK	F - VALVE	
1/2"	2.5	3.5	2 F.U. @ psi	6.0 F.U. @ psi	
3/4"	6.6	4.4	8 F.U. @ psi	F.U. @ psi	
1"	13.4	5.2	19 F.U. @ psi	F.U. @ psi	
1-1/4"	23.3	5.9	37 F.U. @ psi	6 F.U. @ psi	
1-1/2"	36.7	6.6	74 F.U. @ psi	23 F.U. @ psi	
2"	76.4	7.9	254 F.U. @ psi	132 F.U. @ psi	

* DOMESTIC WATER BACKFLOW PREVENTER MODEL: "WILKINS"975XL SIZE 1-1/2"
** PRESSURE REGULATING VALVE MODEL: "NA" SIZE N/A

WATER PIPE SIZING CHART (HOT WATER)					
PIPE SIZE	GPM	VELOCITY FT/SEC	FIXTURE UNITS		
			F - TANK	F - VALVE	
1/2"	2.5	3.5	2 F.U. @ psi	F.U. @ psi	
3/4"	6.6	4.4	8 F.U. @ psi	F.U. @ psi	
1"	13.2	5.0	19 F.U. @ psi	F.U. @ psi	
1-1/4"	19.0	5.0	37 F.U. @ psi	6 F.U. @ psi	

GREASE INTERCEPTOR CALCULATION			
FIXTURE	QTY.	FU	FU TOTAL
FLOOR DRAIN/FLOOR SINK 3" TRAP	8	5	40
TRENCH DRAIN 3" TRAP	1	5	5
MOP SINK	1	2	2
TOTAL			47 (24 GPM)
FIXTURE UNIT VALUE BASED ON IPC, SECTION 709			
FLOW THROUGH TYPE GREASE INTERCEPTOR MINIMUM SIZE WILL BE 50 POUND GREASE CAPACITY PER IPC, TABLE 1003.34.1.			
GRAVITY TYPE GREASE INTERCEPTOR SIZE BASED ON 24 GPM WITH 30 MINUTE RETENTION TIME (24*30=720) TO BE SIZED AT 1000 GALLONS.			



WASTE & VENT PLAN		1
Scale: 1/4"=1'-0"		P-101



PANDA RESTAURANT GROUP INC.
1683 Walnut Grove Ave.
Rosemead, California
91710
Telephone: 626.799.9898
Facsimile: 626.372.8288

All ideas, designs, arrangement and plans indicated or represented by this drawing are the property of Panda Express Inc. and were created for use on this specific project. None of these ideas, designs, arrangements or plans may be used by or disclosed to any person, firm, or corporation without the written permission of Panda Express Inc.

REVISIONS:
REV 1 - 04.22.2021 PERMIT COMMENTS

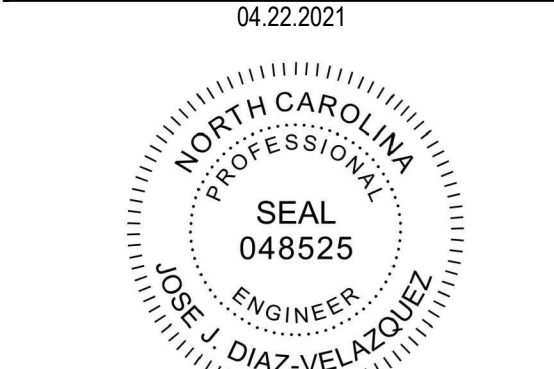
ISSUE DATE:
1 02.09.2021 ISSUE FOR PERMIT
2 04.22.2021 ISSUE FOR BID

DRAWN BY: IRR

PANDA PROJECT #: - S8-21-D8101
C&P PROJECT #: - 2210016



2600 Maitland Center Pkwy. Maitland, FL 32751
P (407) 661-9100
F (407) 661-9101
www.c-p.com
Florida Company Certificate #A-CA-00000000



PANDA EXPRESS
TRUE WARM AND WELCOME 2300
3101 RAEFORD ROAD
FAYETTEVILLE, NC 28303

P-101

WASTE & VENT PLAN

TRUE WARM & WELCOME 2300 R4