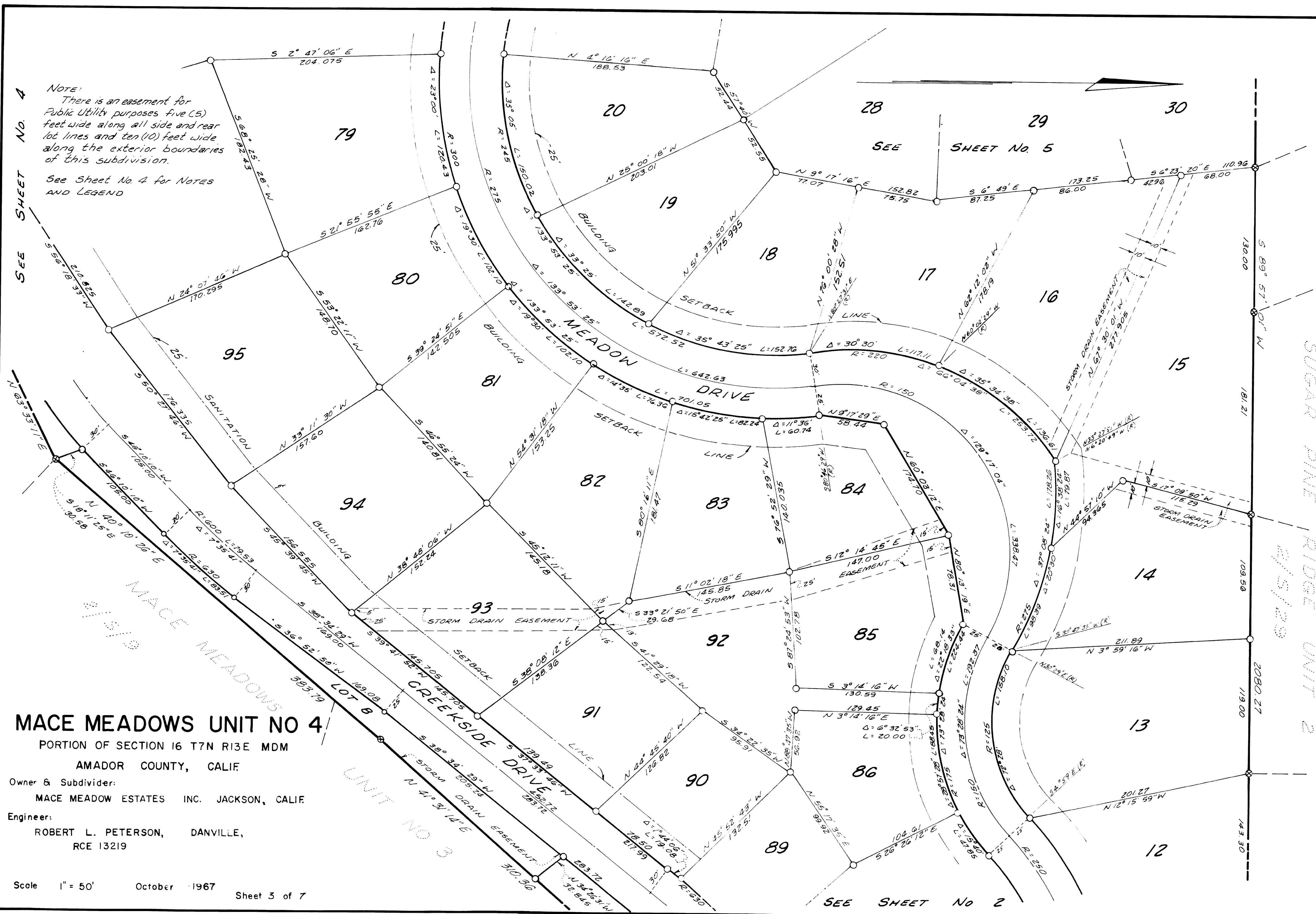


SEE SHEET No. 4

NOTE:  
There is an easement for Public Utility purposes five (5) feet wide along all side and rear lot lines and ten (10) feet wide along the exterior boundaries of this subdivision.

See Sheet No. 4 for NOTES AND LEGEND



# MACE MEADOWS UNIT NO 4

PORTION OF SECTION 16 T7N R13E MDM  
AMADOR COUNTY, CALIF.

Owner & Subdivider:  
MACE MEADOW ESTATES INC. JACKSON, CALIF.  
Engineer:  
ROBERT L. PETERSON, DANVILLE,  
RCE 13219