

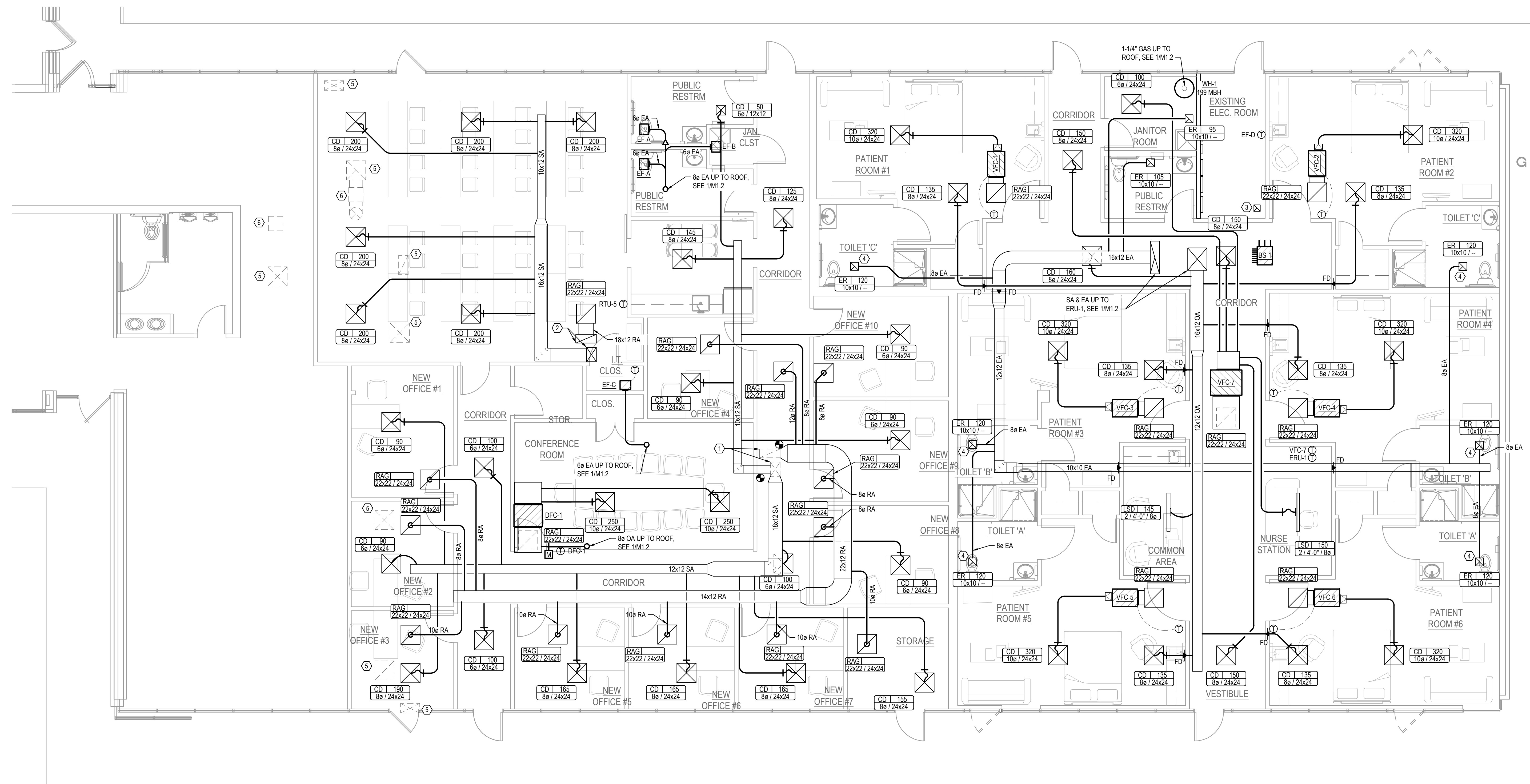
1. EXISTING DUCT DROP FROM RTU-6 TO REMAIN.
2. SA & RA UP TO RTU-5. SEE 1/M1.2.
3. 8x8 EA FROM EF-D. TERMINATE DUCT 12" BELOW ROOF LINE
4. PROVIDE 26 GA SHEET METAL DUCT ALL THE WAY TO GRILLE; FLEX DUCT IS NOT ACCEPTABLE
5. DEMO EXISTING AIR DISTRIBUTION DEVICE AND ASSOCIATED BRANCH DUCTWORK; CAP TAKEOFF AT TRUNK DUCT
6. DEMO EXISTING EXHAUST FAN AND ASSOCIATED DUCTWORK

© 2019, AKA STUDIO, P.C. THESE DRAWINGS AND DESIGNS ARE PROTECTED BY THE COPYRIGHT LAWS OF THE UNITED STATES. THESE DRAWINGS OR ANY PART THEREOF MAY NOT BE USED FOR ANY PURPOSE OR REPRODUCED IN ANY FORM OR BY ANY MEANS WITHOUT THE WRITTEN CONSENT OF AKA STUDIO, P.C.

Professional Engineer Seal for Georgia, No. PE00554, James Daniel Hubbart.

PROJECT #01913-A  
33300 NE EXPRESSWAY  
CHAMBLEE, GA 30341  
TENANT BUILD - OUT  
POST OP & OFFICES  
BARBOUR ORTHOPEDICS  
MECHANICAL FLOOR PLAN - DUCTWORK

## M1.1



1 MECHANICAL PLAN - DUCTWORK  
M1.1 SCALE: 3/16" = 1'-0"