

CORNER RECORD

Agency Index

BK 110 PG 73

Document Number

CR 11470

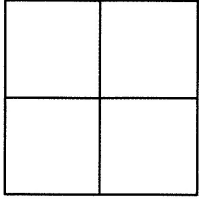
City of OAKLAND

County of ALAMEDA, California

Brief Legal Description WELL MONUMENT LOCATED WITHIN 37TH STREET

AT THE INTERSECTION OF LINDON STREET

CITY OF OAKLAND MON ID: N/A



CORNER TYPE

COORDINATES (Optional)

Government Corner ☐ Control ☒
Meander ☐ Property ☐
Rancho ☐ Other ☐

N. _____ E. _____

Elevation _____

Units Metric ☐ U.S. Survey Foot ☐

Horizontal Datum _____

Zone _____ Epoch Date _____

Vertical Datum _____

☐ Complies with Public Resources Code §§8801-8819☐ Complies with Public Resources Code §§8890-8902

Date of Survey 5/17/18

PLS Act Ref: ☐ 8765(d) ☒ 8771 ☐ 8773 ☐ Other:

Corner/Monument: ☒ Left as found ☐ Established ☐ Rebuilt ☒ Pre-Construction
☐ Found and tagged ☐ Reestablished ☒ Referenced ☐ Post-Construction

Narrative of corner identified and monument as found, set, reset, replaced, or removed:

☐ See sheet #2 for description(s) :

FOUND BRASS DISK WITH PUNCH IN MONUMENT WELL "CITY OF OAKLAND CITY SURVEYOR LS8934 -2017.

FOUND AND SET POINTS AS SHOWN ON PAGE 2.

THIS POINT WAS REFERENCED PRIOR TO A CONSTRUCTION PROJECT IN THE VICINITY.

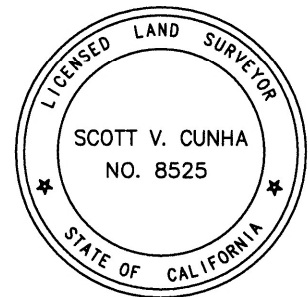
THE TIES SHOWN HEREON ARE FOR THE PURPOSE OF PERPETUATING FOUND MONUMENTATION.

NO CLAIM IS MADE AS TO THE RELATIONSHIP OF THE POINTS OR LINES SHOWN HEREON TO TRUE BOUNDARY LOCATION.

SURVEYOR'S STATEMENT

This Corner Record was prepared by me or under my direction in conformance with

the Professional Land Surveyors' Act on JUNE 1, 2018.

Signed Scott V Cunha P.L.S. or R.C.E. No. LS 8525
SCOTT V. CUNHA

COUNTY SURVEYOR'S STATEMENT

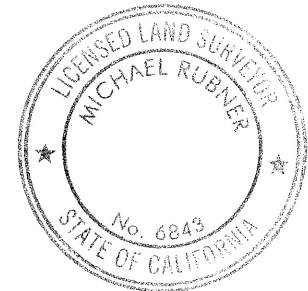
This Corner Record was received 5 JUNE 2018

and examined and filed 2 AUGUST 2018

Signed Michael Rubner P.L.S. or R.C.E. No. 6843

Title COUNTY SURVEYOR

County Surveyor's Comment

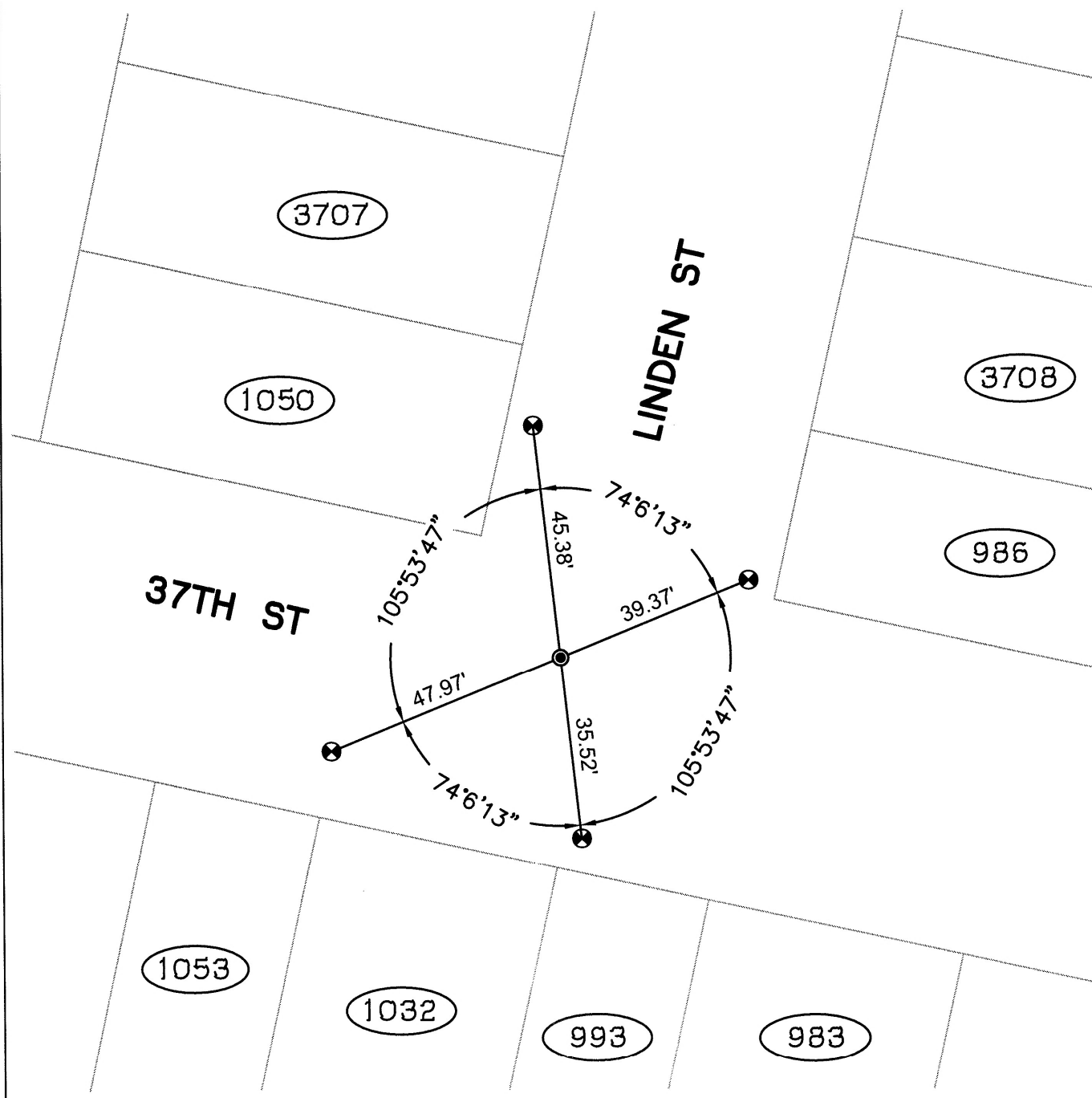


SCALE: 1"=30'

LEGEND

- FOUND BRASS DISC WITH PUNCH IN MONUMENT WELL
- SET REBAR & CAP
- ⊗ SET CUT CROSS IN WALK
- ⊗ SET PK NAIL & LARGE SHINER
- ⊗ SET CUT CROSS IN CURB

(19592) REFERENCE STREET ADDRESS



218054-37th-CR-1