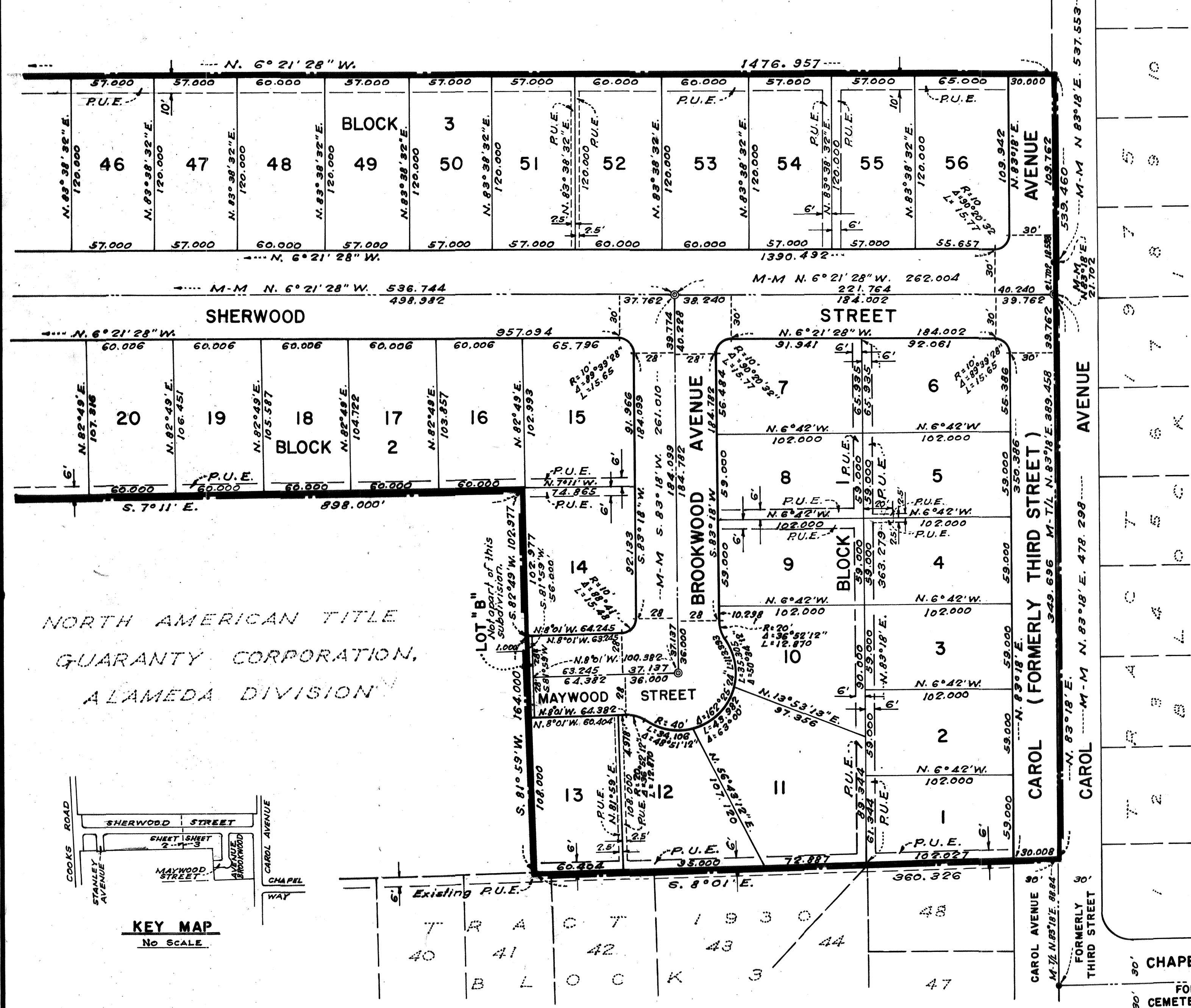


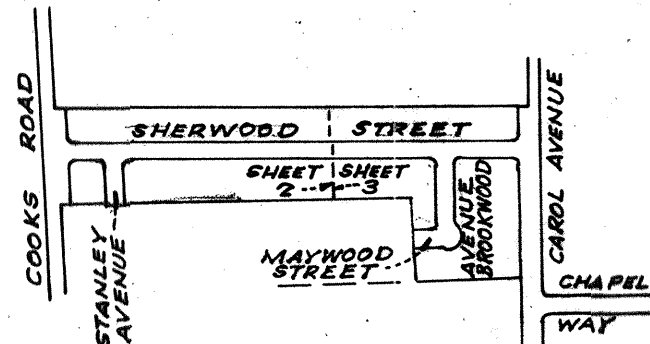
WASHINGTON UNION HIGH SCHOOL
OF ALAMEDA COUNTY



LEGEND:

- Concrete monuments to be set shown thus: ⊙
- Existing monuments shown thus: •
- Basis of Bearing: Tract 1930
- Building set-back lines to be as required by the zoning ordinance of the City of Fremont.
- Public Utility Easement designated P.U.E.

NORTH AMERICAN TITLE
GUARANTY CORPORATION,
ALAMEDA DIVISION



TRACT 2018
LINWOOD ESTATES
UNIT NO. 1
CITY OF FREMONT
ALAMEDA COUNTY, CALIFORNIA
CHARLES H. PESTANA
REGISTERED CIVIL ENGINEER NO. 8395
MAY, 1959
SCALE: 1"=50'



AQ110322 SCALE IN FEET
SHEET 3 OF 3 SHEETS

TR
2018