

CORNER RECORD

Agency Index

BK 117 PG 57

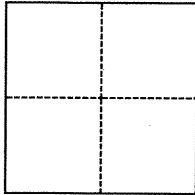
Document Number

CR 12339

City of Ashland Alameda Co County of Alameda, CaliforniaBrief Legal Description Mon @ Haviland Ave and Blossom Way

CORNER TYPE

COORDINATES (Optional)



- ☐ Government Corner ☒ Control
☐ Meander ☐ Property
☐ Rancho ☐ Other

Date of Survey 8-2-18

N. _____ E. _____

Elevation _____

Units

☐ Metric☒ U.S. Survey Foot

Horizontal Datum _____

Zone _____

Epoch Date _____

Vertical Datum _____

☐ Complies with Public Resources Code §§8801-8819☐ Complies with Public Resources Code §§8890-8902

PLS Act Ref.:

☐ 8765(d)☒ 8771☐ 8773☐ Other:Corner/
Monument:☒ Left as found☐ Established☐ Rebuilt☐ Pre-Construction☐ Found and tagged☐ Reestablished☐ Referenced☒ Post-Construction

Narrative of corner identified and monument as found, set, reset, replaced, or removed:

☐ See sheet #2 for description(s):

Pre 8619
Found in good condition

SURVEYOR'S STATEMENT

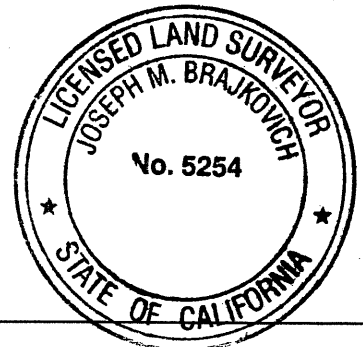
This Corner Record was prepared by me or under my direction in conformance with

the Professional Land Surveyors' Act on

Signed

Joseph M. Brajkovich

P.L.S. or R.C.E. No.

5254

COUNTY SURVEYOR'S STATEMENT

This Corner Record was received

9 OCTOBER 2018

and examined and filed

18 JANUARY 2019

Signed

Michael Rubner

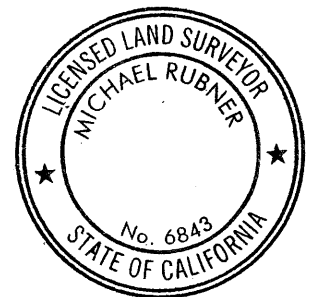
P.L.S. or R.C.E. No.

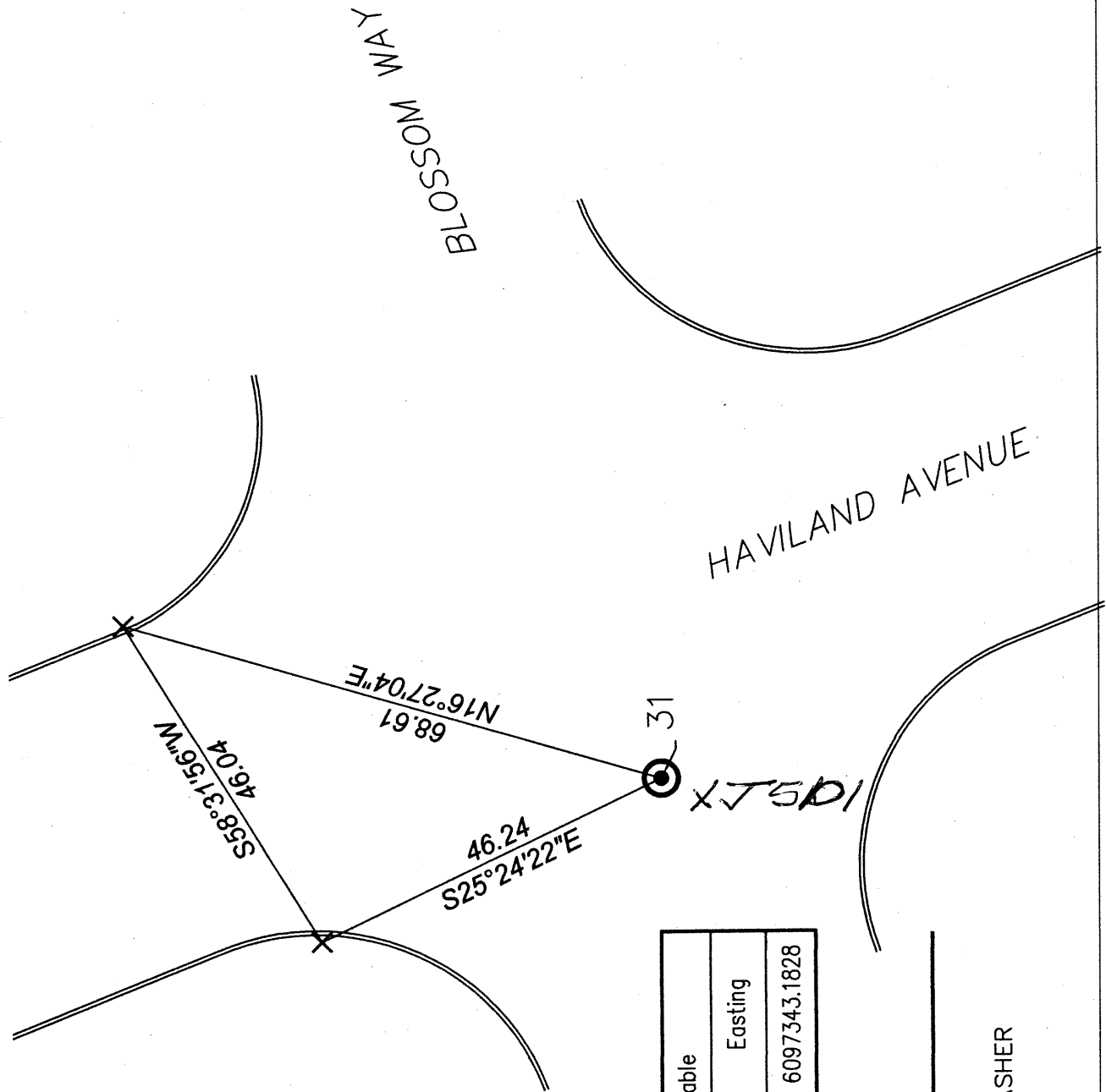
6843

Title

County Surveyor

County Surveyor's Comment





↑
REF.
NORTH
1" = 20'

Control Point Table		
Point #	Northing	Easting
31	2073372.5079	6097343.1828

LEGEND

- ⊙ MONUMENT
- PK NAIL & WASHER
- × SAW CUT-X