

---

# 2011

---

GOLD COAST





### *GoldCoast Skateboards*

We plot our course in four directions: Skateboarding, Culture, Travel, and Film. Skateboard everywhere you can, absorb the things it brings in to your life, and take a few photos along the way. We figure if we follow that direction, we'll never get lost. Even if we don't know where we are from time to time.



## *Heritage*

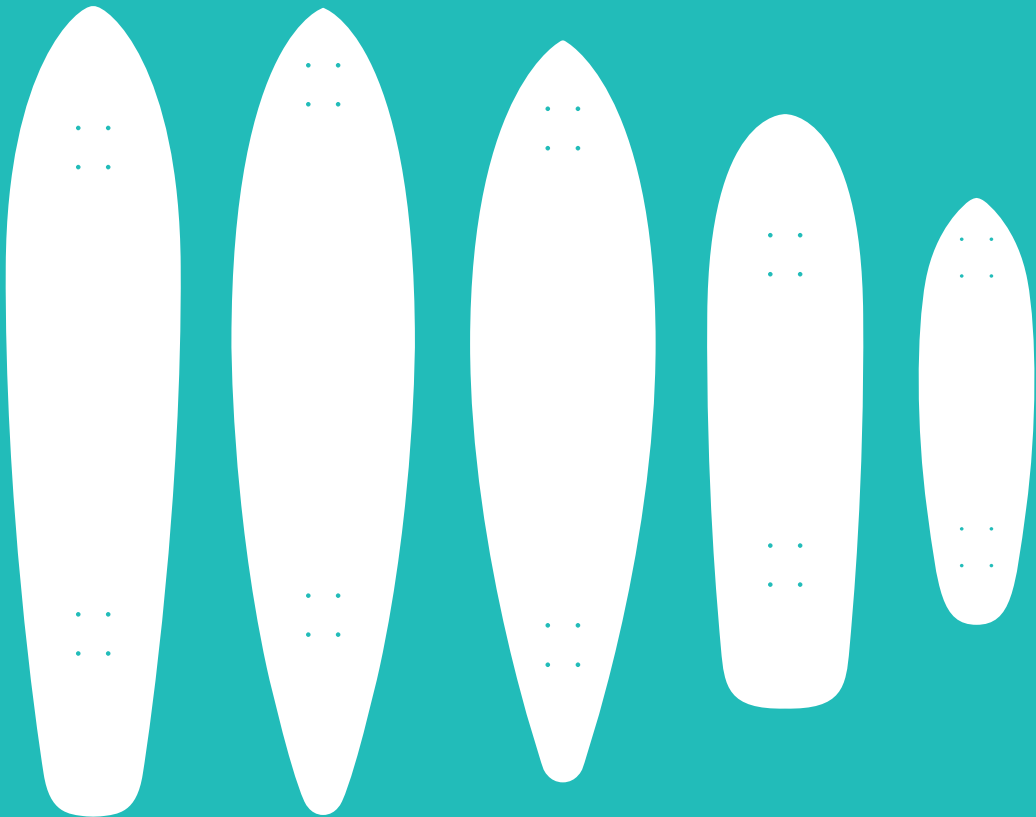
The term, “garage brewed speed” sounds like something a few really skinny guys cook up in the desert outside Temecula, but in our case it’s about the other kind of tweaking. We looked at the guys that are constantly working on their setups, whether it’s a motorcycle, car, or skateboard, all in the name of a few more MPH, and the things that surround them. The Heritage Series is all about taking a little more time to get there quick.

## *Form*

Skateboarding and art are both things that can be solo activities, but work better when you have a group of people around to inspire you. The Form Series brings you hand drawn and painted graphics from some of our friends.

## *Focus*

Our Shutter Clique loves the anticipation of waiting for a roll of film to come back. There is something immensely satisfying about not getting to relive the moment of a photograph for a few days. Add in the light leaks, the blurs, and the cross processing, and there’s a whole new experience waiting for you. The Focus Series brings a fresh perspective to skateboarding that will make people look.



*Nomad*

44" Long  
9" Wide  
24" Wheelbase  
Concave  
Kicktail

*Floater*

44" Long  
9.5" Wide  
24" Wheelbase  
Concave

*Drifter*

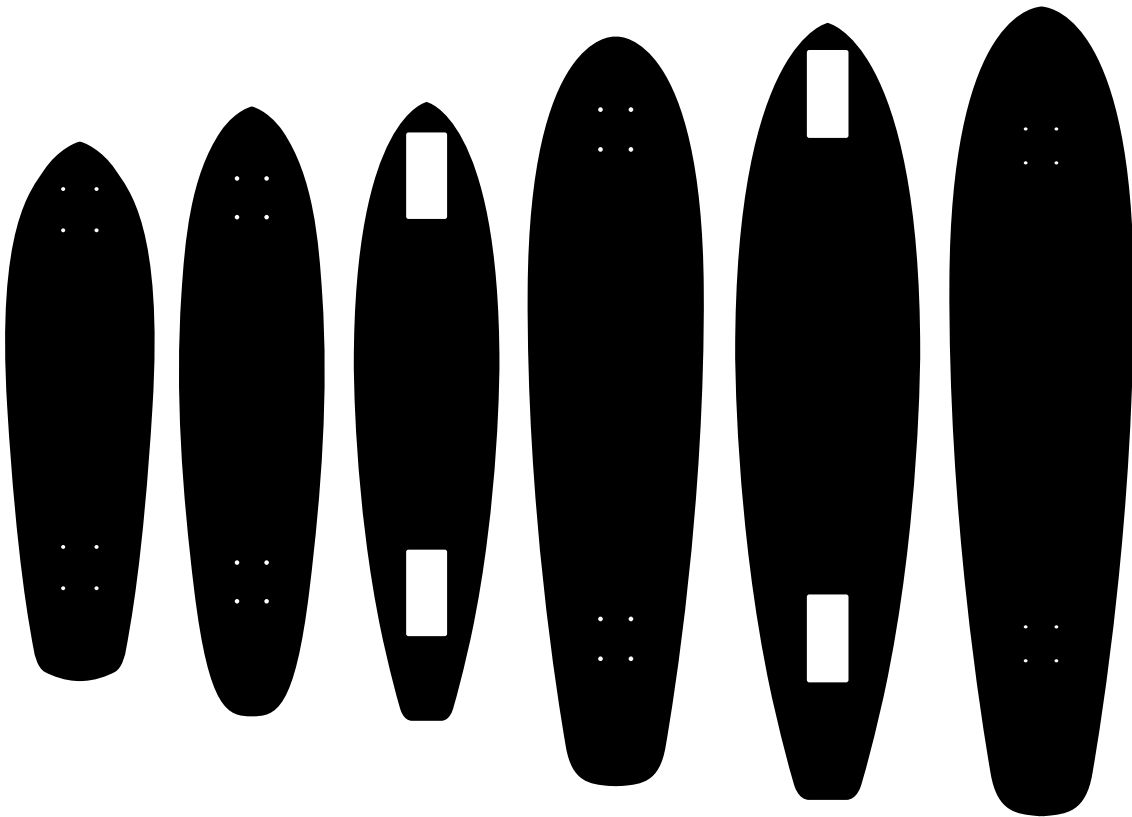
40" Long  
10" Wide  
25" Wheelbase  
Concave

*Renegade*

34" Long  
9.5" Wide  
15" Wheelbase  
Concave  
Kicktail

*Pan*

24" Long  
6.5" Wide  
14" Wheelbase  
Kicktail



*Shovel*

27" Long  
7.5" Wide  
15" Wheelbase  
Concave  
Kicktail

*Roller*

35.25" Long  
8.25" Wide  
20.5" Wheelbase  
Camber Concave  
Kicktail

*Bolt*

34" Long  
8" Wide  
18 - 23" Wheelbase  
Kicktail

*Moon*

40" Long  
9.5" Wide  
26" Wheelbase  
Concave  
Kicktail

*Tach 42*

42" Long  
10" Wide  
25 - 29" Wheelbase  
Kicktail

*Dart*

44" Long  
10" Wide  
25" Wheelbase  
Concave  
Kicktail



## Heritage Series



### *the Evolution*

Infinite Displacement.

People always say, "It's the journey, not the destination." But, sometimes it's the journey to the journey. The countless hours spent fabricating, welding, experimenting, failing and succeeding build as much character as the road trips you take after. The Evolution is our 5 ply, fiberglass overlay, Roller shape, that has as much spring as a springer and our 70mm Shred Boot wheels offer a smoother ride than a bagger.

- The Roller Shape
- 35.25" Long x 8.25" Wide, 20.5" Wheelbase
- Camber with Concave
- 5 Ply Maple construction with Fiberglass Overlay
- Printed Grip Tape
- 70mm, 85a Wheels
- 179mm Century Trucks
- Reverse Pivot with Raw Tumbled Finish
- Genuine GoldCoast Parts Bearings

COM-EVO-FG33



### *the Pier*

Putting the "rad" in radius.

The Pier is a 27" Shovel, a perfect board for getting from here to there with a trick or two in between. The Pier features super soft 57mm Vicious wheels, so when the road gets rough you keep the fillings in your teeth.

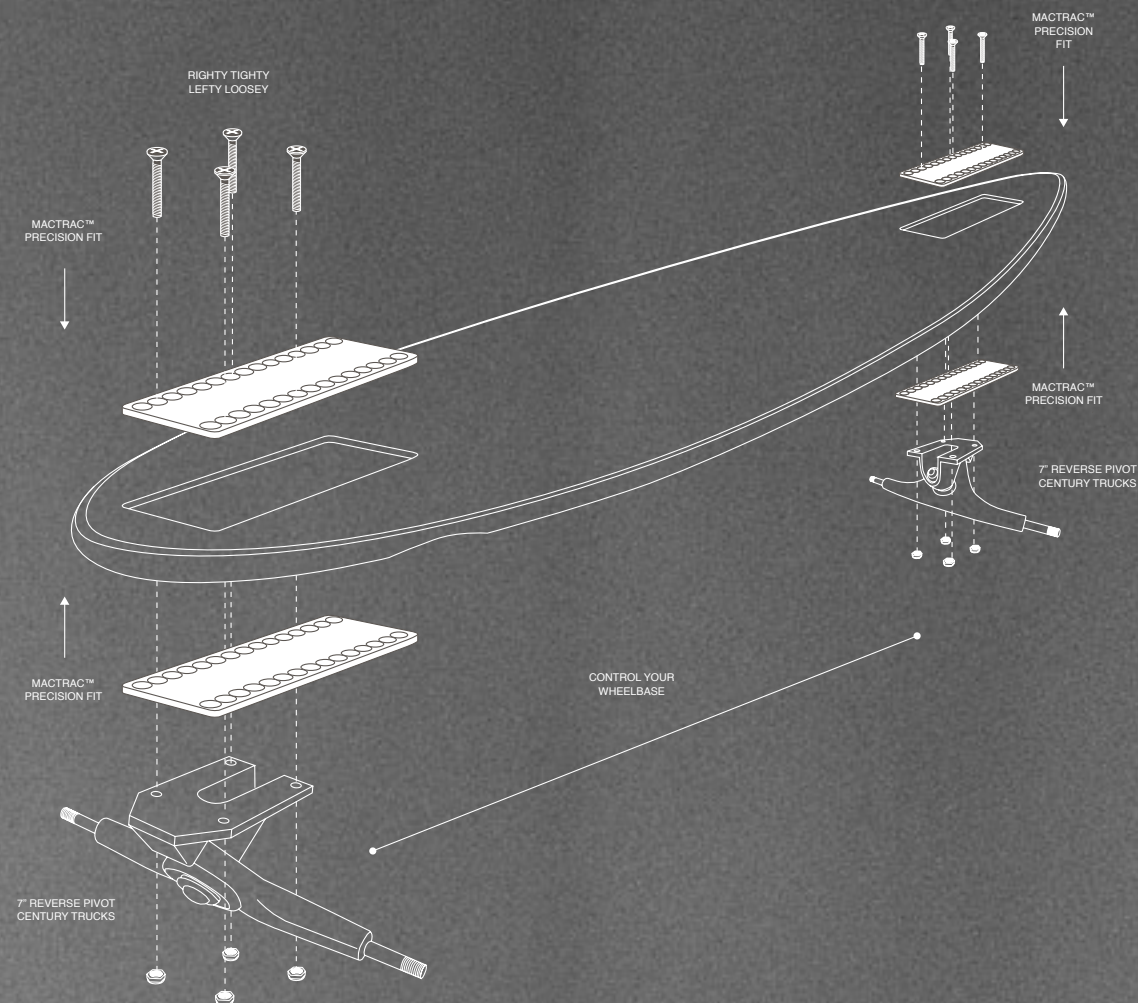
- The Shovel Shape
- 27" Long x 7.5" Wide, 15" Wheelbase
- 7ply Canadian Maple
- Die Cut Grip Tape
- 57mm, 85a Wheels
- 129mm Century Trucks
- Raw Tumbled Finish
- Genuine GoldCoast Parts Bearings

GRAY - COM-PIRG-S27  
 BLUE - COM-PIRB-S27  
 YELLOW - COM-PIRY-S27  
 ORANGE - COM-PIR-S27





MACTRAC



## Micro Adjustment Control

Customization is one of skateboarding's keystones. From the moment you spray paint your grip tape, to the final sticker you put on your deck, the goal seems to be to make your ride your own. GoldCoast is proud to introduce the most advanced way to individualize your ride, the MacTrac™. This patent pending innovation will change the possibilities of your skateboard forever. Created in labs near the earth's core, by scientists who thought a jet pack wasn't enough fun, the MacTrac™ is the only way to make your next session truly yours.

Available on the GoldCoast Rat and the GoldCoast Circuit.



TECH-LOVE



TRUE TURNING



SMILES 4 MILES

## Mobility

MacTrac™ allows you to adjust your trucks nearly 4 cm in or out on both sides. Bring your trucks closer to each other for extra mobility in tight situations. The morning business suit slalom to the coffee shop just got a whole lot easier.

## Stability

Speed wobbles are the harbinger of doom. Now, thanks to the MacTrac™, you can max out your wheelbase for a stable ride, even at warp speed. Your only problem now is running out of hills to bomb.

## the Rat

Hauls more ass than a boatload of donkeys.

Fire engine red scallops on a matte black board sitting on whitewall wheels, this board looks mean. But this is no showroom decoration, this is made for the streets. The patent pending MACTRAC™ system lets you fine tune your ride depending on if you're heading to the steeps, the hairpins, or maybe both. The 70mm Shred Boot wheels will make sure you keep it between the lines, and the Tach kicktail shape will allow you to get over any debris in the road.

- The Tach Shape with MacTrac™
- 42" Long x 10" Wide
- 25" - 29" Wheelbase
- 7ply Canadian Maple
- Die Cut Grip Tape
- 70mm, 85a Wheels
- 179mm Century Trucks
- Reverse Pivot with Raw Tumbled Finish
- Genuine GoldCoast Parts Bearings

COM-RAT-T42



## the Circuit

Fender flares not included.

Straight out of LeMans, the Circuit is meant for the switchbacks. Light, nimble and completely custom with MACTRAC™ adjustment. 70mm Shred Boot wheels will keep the fishtailing to a minimum, and the Bolt kicktail shape will allow you to get over any cracks or rocks that might try and stop you from winning gold. Or just getting to the block party on time.

- The Bolt Shape with MacTrac™
- 34" Long x 8" Wide
- 18" - 23" Wheelbase
- 7ply Canadian Maple
- Printed Grip Tape
- 70mm, 85a Wheels
- 179mm Century Trucks
- Reverse Pivot with Anodized Gold Finish
- Genuine GoldCoast Parts Bearings

COM-CIR-T34



## *the Venice*

Clean lines, great colors, and a little flip-flop-flair make the Venice the freshest board on the boardwalk. The Venice is a 44" Nomad cruiser, with 70mm wheels, which get going quick and grip the road.

- The Nomad Shape
- 44" Long x 9.5" Wide, 24" Wheelbase
- 7ply Canadian Maple
- Printed Grip Tape
- 70mm, 85a Wheels
- 179mm Century Trucks
- Reverse Pivot with Matte Black Powder Coat Finish
- Genuine GoldCoast Parts Bearings

COM-VEN-N44



## *the Modra*

Blonde or Brunette?

Classic surfboard style, timeless and clean. The hand drawn art on the board comes from our friends Jonathan Mattson of the Mattson 2. They play surf jazz that sounds like it could've been written yesterday or in 1955, it's classy and timeless too. This 44" Dart shape has a kicktail and mellow concave for a comfortable ride that is still responsive.

- The Dart Shape
- 44" Long x 10" Wide, 26" Wheelbase
- 7ply Canadian Maple
- Printed Grip Tape
- 70mm, 85a Wheels
- 179mm Century Trucks
- Reverse Pivot with Raw Tumbled Finish
- Genuine GoldCoast Parts Bearings

RED - COM-MOD-RD44  
PURPLE - COM-MOD-PD44



## *the Classic Floater*

Crystal Blue Persuasion.

What's more timeless than a 44" Pintail? Not much. Like a t-shirt and jeans, it's good to go whenever, wherever. 70mm wheels get you over the bumps and grip well for comfortable cruising.

- The Floater Shape
- 44" Long x 10" Wide, 26" Wheelbase
- 7ply Canadian Maple / Bi-Axial Bamboo
- Printed Grip Tape / Clear Grip Tape
- 70mm, 85a Wheels
- 179mm Century Trucks
- Reverse Pivot with Gloss White Powder Coat Finish
- Genuine GoldCoast Parts Bearings

BLACK - COM-CLB-F44  
TURQUOISE - COM-CLT-F44  
BAMBOO - COM-CB-44



## *the Classic Renegade*

Mean, Green, Street-Shredding Machine

The Renegade is a classic pool shape that would make any Dagger or Ramp Local jealous. The 57mm Vicious wheels roll smooth, even if you get challenged to a joust in a drainage ditch.

- The Renegade Shape
- 34" Long x 9.5" Wide, 15" Wheelbase
- 7ply Canadian Maple
- Printed Grip Tape
- 57mm, 85a Wheels
- 129mm Century Trucks
- Gloss White Powder Coat Finish
- Genuine GoldCoast Parts Bearings

BLACK - COM-CLCB-R44  
GREEN - COM-CLG-R32





## Form Series



### *the Connect*

Pete Panciera makes mixed media, paper craft art that could be described as “geo-hectic”. It has a look that is calculated and clean, while at the same time has fun spontaneous elements, much like a skate session with Pete. He chose our Shovel shape for his board, because of it’s small shape and super soft 57mm Vicious wheels. We said ok, because he’s from New York and would have yelled at us if we said no.

- The Shovel Shape
- 27” Long x 7.5” Wide, 15” Wheelbase
- 7ply Canadian Maple
- Die Cut & Printed Grip Tape
- 57mm, 85a Vicious Wheels
- 129mm Century Trucks
- Raw Tumbled Finish
- Genuine GoldCoast Parts Bearings

COM-CCT-S27



### *Pete Panciera / Connect*

Connect is the studio of Brooklyn based graphic artist Pete Panciera. Pete’s work has been exhibited in shows in LA, New York, Sydney, and has graced the pages of numerous publications such as Print, Arkitip, Re:Up, and Beautiful/Decay. He currently holds a position as senior designer at NYC based skate company Zoo York.

Pete completed his BFA in Communication design at the University of Connecticut in May of 2006 under the direction of Edvin Yegir, Mark Zurolo, Ahree Lee, Randall Hoyt, Prem Krishnamurthy, and Juliette Cezzar.



## *the Heavy Pile*

Rock Your Socks Off.

Rolling in glorious stereophonic lo-fidelity, the Heavy Pile is here to rock your socks off. Literally. Custom shag carpet topsheet keeps your piggies wiggling in comfort as you roll to the record store to pick up ELO's masterpiece, "Out of the Blue".

- The Dart Shape
- 44" Long x 10" Wide, 26" Wheelbase
- 7ply Canadian Maple
- Shag Grip with Custom GoldCoast Hair Pick
- 70mm, 85a Wheels
- 179mm Century Trucks
- Reverse Pivot with Raw Tumbled Finish
- Genuine GoldCoast Parts Bearings

COM-HVY-D44



## *the Pile Driver*

Like Scrappy to Scooby, the Pile Driver is a rad little sidekick. Our signature custom Shag carpet grip lines our Shovel cruiser shape, and then we added Century 179mm reverse pivot trucks and 70mm Shred Boot wheels. The fun of a dune buggy with the comfort of a Microbus? Time to jump in feet first.

- The Shovel Shape
- 27" Long x 7.5" Wide, 15" Wheelbase
- 7ply Canadian Maple
- Shag Grip with Custom GoldCoast Hair Pick
- 70mm, 85a Wheels
- 179mm Century Trucks
- Reverse Pivot with Raw Tumbled Finish
- Genuine GoldCoast Parts Bearings

COM-PIL-S27



## *the Shaka Tack*

Keep it tight while hanging loose.

The ShakaTack is our 44" bamboo pintail Floater shape, which has just enough concave to give your feet a nice pocket to sit in while you cruise. Speaking of pockets, when somebody shouts, "Nice board!" you should reach in to your pocket, pretend like you're pulling something important out, and come up with a nice Shaka. It's like a good vibes magic trick.

- The Floater Shape
- 44" Long x 10" Wide, 26" Wheelbase
- Bi-Axial Bamboo Laminate Construction
- Clear Grip Tape
- 70mm, 85a Wheels
- 179mm Century Trucks
- Reverse Pivot with Raw Tumbled Finish
- Genuine GoldCoast Parts Bearings

COM-SHK-F44



## *the Boozal*

Grows Fast. Rides Faster.

Bamboo is the fastest growing plant on earth (in some cases up to almost 2 feet per day!). It's light, strong, and renewable, which is why we like it. The Boozal comes in the 44" Nomad shape with kicktail, which is great for popping over cracks. The wheelbase makes it very nimble, ideal for urban riding, but the hand drawn artwork will always keep you close to the beach.

- The Nomad Shape
- 44" Long x 9.5" Wide, 24" Wheelbase
- Bi-Axial Bamboo Laminate Construction
- Custom "Shredded" Grip job
- 70mm, 85a Wheels
- 179mm Century Trucks
- Reverse Pivot, with Custom Paint Splatter Finish
- Genuine GoldCoast Parts Bearings

COM-BOO-N44



## *the Sketchboo*

Shoots to Thrill.

Mellow, island vibes were never this exciting. The SketchBoo is our Bamboo Nomad shape, which has a wheelbase that is great for maneuverability and a kicktail for added leverage when you need to get a little wicked. 70mm wheels and Century 179mm reverse pivot trucks make this a rad combo for slashes as well as bombing. Jah know what I mean?

- The Nomad Shape
- 44" Long x 9.5" Wide, 24" Wheelbase
- Bi-Axial Bamboo Laminate Construction
- Clear Grip Tape
- 70mm, 85a Wheels
- 179mm Century Trucks
- Reverse Pivot with Custom Paint Splatter Finish
- Genuine GoldCoast Parts Bearings

COM-SB-N44



## *the Freedom*

Travel can sometimes engulf you like a vortex. You start off in one place, and the next thing you know, you're on the other side of the world wondering how you wound up there. It's usually a really good story, if you can remember it all. The Moon shape is a perfect 40" of kicktail fun and we adorned it with some of the places we love to visit, as well as a few we still have on the list.

- The Moon Shape
- 40" Long x 9.5" Wide, 24" Wheelbase
- 7ply Canadian Maple
- Printed Grip Tape
- 70mm, 85a Wheels
- 179mm Century Trucks
- Reverse Pivot with Raw Tumbled Finish
- Genuine GoldCoast Parts Bearings

COM-FRE-M40



## *the Krafted*

Get the most bounce for the ounce. With 5 ply of maple, a fiberglass overlay, mounted on 179mm reverse pivot Century Trucks and 65mm wheels, The Krafted is a great board for springy carves, either in the hills or the city (or both if you live in SF). The kicktail Roller shape also allows you to get a little aggro with the turns if the opportunity arises.

- The Roller Shape
- 32.25" Long x 8.25" Wide, 20.5" Wheelbase
- Camber with Concave
- 5 Ply Maple construction with Fiberglass Overlay
- Printed Grip Tape
- 65mm, 85a Wheels
- 179mm Century Trucks
- Reverse Pivot with Gloss White/Matte Black Powder Coat Finish
- Genuine GoldCoast Parts Bearings

COM-KRF-FG33



## *the Sunset Cliffs*

Red Sky At Night, Cruiser's Delight.

The weather is looking to stay mild a spell on the Sunset Cliffs. 40" Drifter pintail, mounted on to 179mm Century Trucks, and 65mm wheels make this an ideal transport between class, the record store, and the house party, or wherever the day takes you.

- The Drifter Shape
- 40" Long x 10" Wide, 25" Wheelbase
- 7ply Canadian Maple
- Printed Grip Tape
- 65mm, 85a Wheels
- 179mm Century Trucks
- Reverse Pivot with Raw Tumbled/Matte Black Powder Coat Finish
- Genuine GoldCoast Parts Bearings

COM-GG-D40





*the Seaweed*

Go with the Flow.  
The Seaweed is a mellow concave 44” Bamboo pintail, a great shape for all around cruising. Push on down to check the waves, or head to the hills for some power carves. The 70mm Shred Boot Wheels are the perfect combination of durometer and shape for a ride that’s grippy and soft.

- The Floater Shape
- 44” Long x 10” Wide, 26” Wheelbase
- Bi-Axial Bamboo Laminate Construction
- Die Cut Grip Tape
- 70mm, 85a Wheels
- 179mm Century Trucks
- Reverse Pivot with Custom Paint Splatter Finish
- Genuine GoldCoast Parts Bearings

COM-SEA-F44



*the Seed*

Grow your own adventure.  
Don’t be fooled by the size, The Seed is big fun. As good for getting around as getting down, the small size is easy to control and can tuck into a backpack for a session that travels with you.

- The Pan Shape
- 24” Long x 6.5” Wide, 14” Wheelbase
- 7ply Canadian Maple
- Printed Grip Tape
- 52mm, 87a Wheels
- 79mm Century Trucks
- Raw Tumbled Finish
- Genuine GoldCoast Parts Bearings

COM-SED-P24



*the Dead*

Don’t Trip.  
The Dead is our classic Renegade shape with custom die cut grip tape and 57mm Vicious Wheels. The tie dye and hand drawn graphic will probably remind that old hippy in your apartment complex of some good times on Haight St.

- The Renegade Shape
- 34” Long x 9.5” Wide, 15” Wheelbase
- 7ply Canadian Maple
- Die Cut Grip Tape
- 57mm, 85a Wheels
- 129mm Century Trucks
- Raw Tumbled Finish
- Genuine GoldCoast Parts Bearings

COM-DED-R32



*Falling Down*

Watch the Sessions Change.  
If you’re trying to get around the city, you want a nimble cruiser, something that’s unobtrusive. At the same time, if there’s a mini ramp session, you don’t want to pack two boards. The Falling Down is a Bamboo Renegade board shape, with 129mm Century Trucks and 57mm Vicious Wheels. Problem solved. We’re solutions people here.

- The Renegade Shpac
- 34” Long x 9.5” Wide, 15” Wheelbase
- Bi-Axial Bamboo Laminate Construction
- Clear Grip Tape
- 57mm, 85a Wheels
- 129mm Century Trucks
- Raw Tumbled Finish
- Genuine GoldCoast Parts Bearings

COM-FD-R40





## Focus Series



### *the Conflict*

Cross Process.

Two images, seemingly at odds with one another, juxtaposed and intertwined to find new life as one. The Conflict is what happens when you throw things together and the result is greater than the sum of its parts. We took our smallest board shape, the Pan, and mounted our biggest wheels, the 70mm Shred Boot, on it. What was produced is one deceptively fun ride that is as easy to carry as it is to enjoy. We always were a fan of mashups.

- The Pan Shape
- 24" Long x 6.5" Wide, 14" Wheelbase
- 7ply Canadian Maple
- Die Cut Grip Tape
- 70mm, 85a Wheels
- 79mm Century Trucks
- Raw Tumbled Finish
- Genuine GoldCoast Parts Bearings

COM-CFT-P24



### *the Blues*

Tone Local.

We asked eight of our photographer friends to bring us their favorite photos that they felt represented the phrase, "The Blues". We then made a rad little collage and put it on our Shovel shape. We then mounted it on Century 179mm reverse pivot trucks, and put 70mm Shred Boot wheels. This stable platform on a small cruiser is so much fun, people might think we named it after what it chases away.

- The Shovel Shape
- 27" Long x 7.5" Wide, 15" Wheelbase
- 7ply Canadian Maple
- Die Cut Grip Tape
- 70mm, 85a Wheels
- 179mm Century Trucks
- Reverse Pivot with Raw Tumbled Finish
- Genuine GoldCoast Parts Bearings

COM-BLU-S27





## *the Rebirth*

Go Back To Collage.

The juxtaposition of images can create an experience that is greater than the sum of it's parts. Each of the fragments of the whole are reborn in singularity. Our Moon shape with a 26" wheelbase and soft 70mm wheels is a extraordinary combination.

- The Moon Shape
- 40" Long x 9.5" Wide, 26" Wheelbase
- Bi-Axial Bamboo Laminate Construction
- Printed Grip Tape
- 70mm, 85a Wheels
- 179mm Century Trucks
- Reverse Pivot with Raw Tumbled Finish
- Genuine GoldCoast Parts Bearings

COM-BIR-M40



## *the Overexposed*

From the darkroom to the green room, The Overexposed has you covered. Its a 40" Drifter pintail, mounted on 179mm reverse pivot Century Trucks and 65mm wheels. It's perfect for the days you want to go out shooting (or just when it's firing).

- The Drifter Shape
- 40" Long x 10" Wide, 25" Wheelbase
- 7ply Canadian Maple
- Printed Grip Tape
- 65mm 85a Wheels
- 179mm Century Trucks
- Reverse Pivot with Raw Tumbled/ Matte Black Powder Coat Finish
- Genuine GoldCoast Parts Bearings

COM-OE-D40



## *the Hour*

It's hard to take a bad photo at dawn or dusk. Photographer's call it "The Magic Hour". Once you shoot at that time of day, you'll know. Once you ride the Hour, our new 35.25" Roller you'll know why we named it after this perfect fleeting time.

- The Roller Shape
- 35.25 Long" x 8.25" Wide, 20.5" Wheelbase
- Camber with Concave
- 5 Ply Maple construction with Fiberglass Overlay
- Printed Grip Tape
- 65mm, 85a Wheels
- 179mm Century Trucks
- Reverse Pivot with Gloss White/Matte Black, Powder Coat Finish
- Genuine GoldCoast Parts Bearings

COM-HR-FG33



## *the Honey*

Tyler Nelson is a traveler, a wanderer. Every time we hear from him, he's always on the road. The photos he sends to us always amaze us, so we put them on a board. The Honey is a 44" Floater with 67mm wheels mounted on 179mm reverse pivot Century Trucks. It's a great skate no matter if you're in Tulsa or Tacoma, New York or New Mexico, Miami or Montreal. You get the idea.

- The Floater Shape
- 44" Long x 10" Wide, 26" Wheelbase
- 7ply Canadian Maple
- Die Cut & Printed Grip Tape
- 67mm, 85a Wheels
- 179mm Century Trucks
- Reverse Pivot with Gloss White/Matte Black, Powder Coat Finish
- Genuine GoldCoast Parts Bearings

COM-HNY-F44





## Century 179mm Reverse Pivot

Custom engineered geometry, grade 8 kingpin, 7075 alloy hanger and baseplate. Century Trucks give you superb turning capabilities, without sacrificing esthetics. The 45 degree angle sits in the happy zone between stability and mobility. The grade 8 kingpin is as tough as it gets, and the hanger and baseplate look as good as they ride.

- 179mm Reverse Pivot
- 90a, Tall Cone, Top Bushing
- 90a, Tall Cone, Bottom Bushing
- Unibody Carbon Steel Axle
- Grade 8 Kingpin

Finishes :

- Raw Tumbled Finish.
- Gloss White, Powder Coat Finish
- Matte Black, Powder Coat Finish
- Raw with Custom Splatter Finish



RAW  
CTR-177MM-R



BLACK  
CTR-177MM-BB



WHITE  
CTR-177MM-WB



SPLATTER  
CTR-177MM-S



RAW  
CTR-129MM-R

## Century 129mm

- 129mm
- Unibody Carbon Steel Axle
- Grade 8 Kingpin
- Raw Tumbled Finish.
- 85a, Tall Cone, Top Bushing
- 85a, Short Cone, Bottom Bushing

## Century 79mm

- 79mm
- Raw Tumbled Finish.
- 85a, Tall Cone, Top Bushing
- 85a, Short Cone, Bottom Bushing



RAW  
CTR-79MM-R

## the Shred Boots

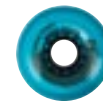
- 70mm Tall, 52mm Wide
- 85a Durometer (Opaque)
- 78a Durometer (Transparent)



ORANGE  
W-SB-FO70



WHITE  
W-SB-W70



BLUE  
W-SB-B70

## the Vicious

- 57mm Tall, 35mm Wide
- 85a Durometer



BLACK  
W-VC-B57



ORANGE  
W-VC-O57



TEAL  
W-VC-T57



## Lil' Camera Keychain

Based off one of our favorite rangefinder cameras, the Lil' Camera keychain is the perfect accessory for your keys. It's also great to pull out and pretend to take a picture of people, guaranteed ice breaker. "Have you seen their little camera?!" It's so rad!!" Welcome to popularity.

GC-LC-KC



## Lil' Pile Keychain

This bad boy features the awesome van from the Heavy Pile, but the keychain will work on keys of all makes and models of vehicles. It took a lot of technology to pull that off, but we didn't give up until we nailed it.

GC-LP-KC

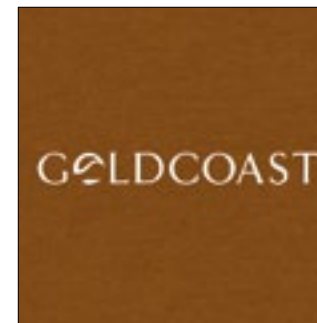




## Softgoods

### Horizon

White, Black, Heather Gray,  
Heather Brown, Heather Red  
Chest Screenprint  
Custom Organic Cotton  
Men's : S, M, L, XL



### Steel

White, Black, Heather Gray  
Left Chest Screenprint  
with Back Screenprint  
Custom Organic Cotton  
Men's : S, M, L, XL



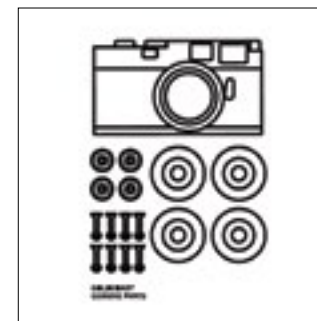
### Garage

White, Black  
Chest Screenprint  
Custom Organic Cotton  
Men's : S, M, L, XL



### Spare Parts

White, Black,  
Heather Brown  
Chest Screenprint  
Custom Organic Cotton  
Men's : S, M, L, XL



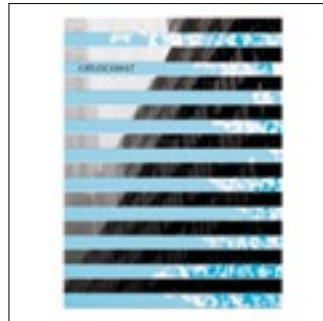
## Road Trip

White, Heather Gray  
Chest Screenprint  
Custom Organic Cotton  
Men's : S, M, L, XL



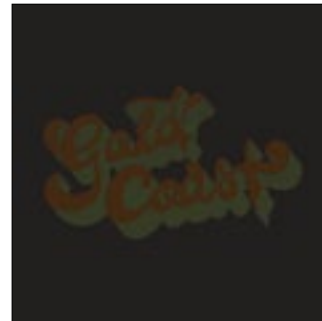
## Conflicted

White  
Chest Screenprint  
Custom Organic Cotton  
Men's : S, M, L, XL



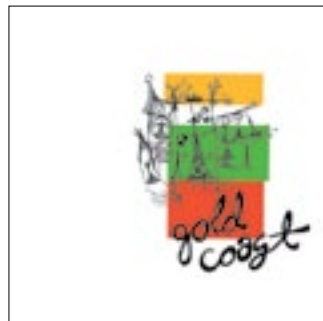
## Kauai

White, Black  
Chest Screenprint  
Custom Organic Cotton  
Men's : S, M, L, XL



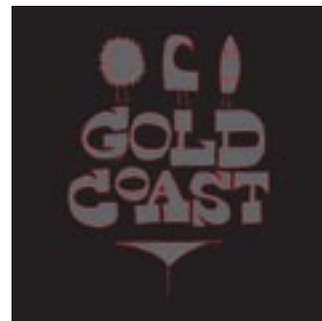
## Mod

White, Black,  
Heather Brown  
Left Chest Screenprint  
Custom Organic Cotton  
Men's : S, M, L, XL



## Amigos

White, Black  
Chest Screenprint  
Custom Organic Cotton  
Men's : S, M, L, XL



## the Mercury

Black, Gray  
100% Acrylic  
Custom Distressed Knit  
Hemp Label

## the South Peak

Natural  
20% Wool  
80% Acrylic  
Hand Knit  
Hemp Label

## the Bruiser

Black  
15% Wool  
85% Acrylic  
Hemp Label



## Coast to Coast the Pile

Black, Maroon  
35% Cotton  
65% Polyester Twill  
100% Nylon Mesh Back  
Adjustable

## the Pile

Fluorescent Orange  
100% Nylon  
Adjustable

## Shop

Black/White  
100% Polyester Foam Front  
100% Nylon Mesh Back  
Adjustable



## Heritage



*the Rat*  
TACH 44



*the Circuit*  
BOLT



*the Venice*  
NOMAD



*the Modra*  
DART



*the Classic*  
FLOATER



*the Classic*  
RENEGADE



*the Pier*  
SHOVEL



*the Evolution*  
ROLLER

## Form



*the Heavy Pile*  
DART



*the Krafted*  
ROLLER



*the Pile Driver*  
SHOVEL



*the Freedom*  
MOON



*the Dead*  
RENEGADE



*Sunset Cliffs*  
DRIFTER

## Focus



*the Hour*  
ROLLER



*Over Exposed*  
DRIFTER



*the Honey*  
FLOATER



*Rebirth*  
MOON



*the Blues*  
SHOVEL



*the Conflict*  
PAN



*the Shaka Tack*  
FLOATER



*the Seaweed*  
FLOATER



*the Boozal*  
NOMAD



*the Sketchboo*  
NOMAD



*Falling Down*  
RENEGADE



*the Seed*  
PAN



*the Connect*  
SHOVEL